

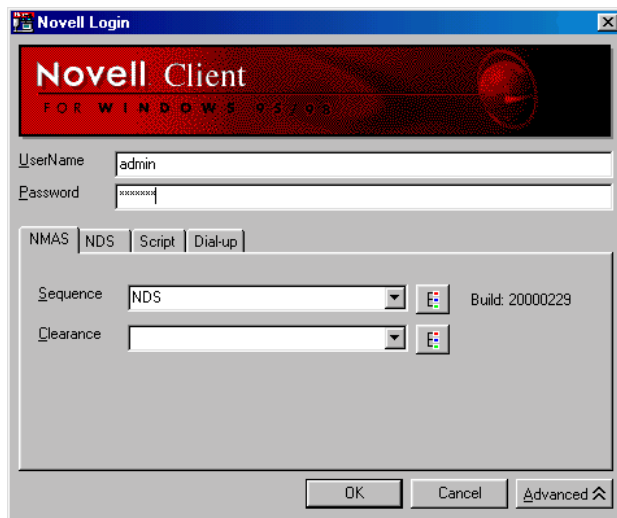
VERSION 1.0

Using NMAS to Log In to the Network

Login Screen

To log in to the network using NMAS, use the NMAS tab on the Novell® Client™ login screen.

NOTE: With NMAS, you don't necessarily need to use a password to log in to the network. You might be required to use a physical device or a biometric method instead. Your network administrator determines which login methods are available to use.



- 1 From the Novell Client login screen, click the Advanced button.
- 2 From the NDS® tab, select the desired NDS login settings.
- 3 From the NMAS tab, select the desired login sequence by using the Browse button.

Login sequences are the defined ways available for logging in to your network using NMAS. They are determined by your network administrator. Not all login sequences are available to each user. Login sequences can include password, physical device, and/or biometric authentication.

Novell®

- 4 From the NMAS tab, select the desired clearance level by using the Browse button (NMAS Enterprise Edition only).

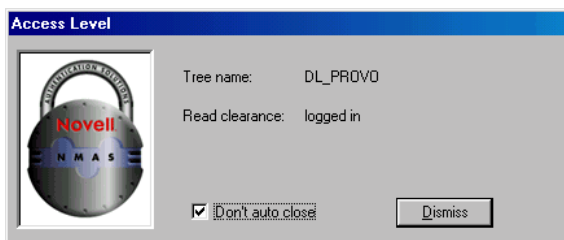
The clearance level is based on the way(s) you are logging in to the network. Your clearance is determined by your network administrator. The clearance level must match the login sequence selected in Step 3.

- 5 Click OK.

Subsequent logins will default to the previous settings.

Access Level (NMAS Enterprise Edition Only)

After you successfully log in to the network using NMAS, the following graphic will display on your screen showing you the access level granted.



System Tray Icon (NMAS Enterprise Edition Only)

To verify your network security clearance, click on the graded authentication icon in the Windows* system tray.



Click here ↗

Your security clearance information will be displayed.

Unlocking Your Windows Workstation

To unlock your Windows workstation, use the same procedure you used to log in with NMAS. All previously established connections will be restored.