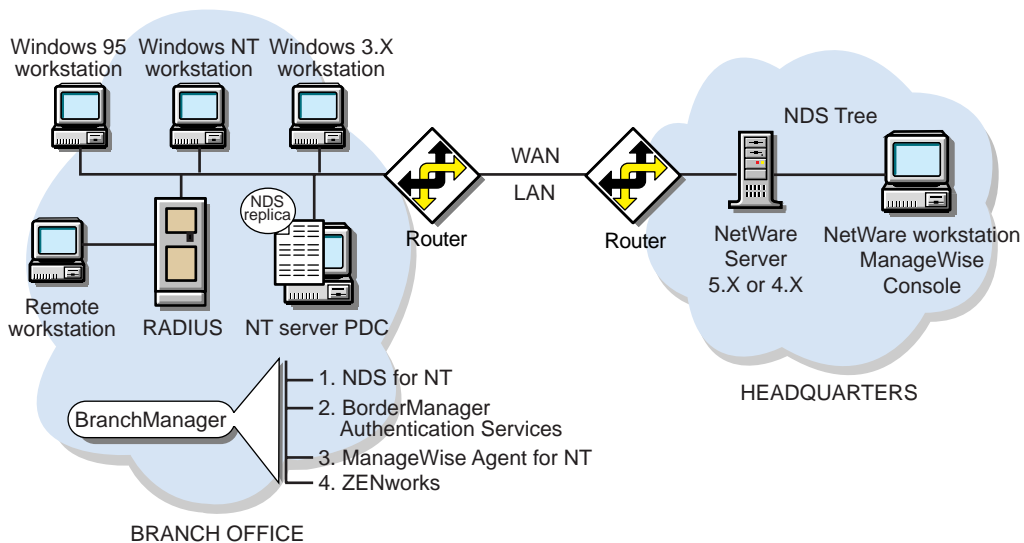


# Novell BranchManager for NT Quick Start

Novell® BranchManager™ for NT allows users to manage and administer their NetWare® and Windows® NT\* platforms from a single environment by bringing several existing Novell products together. Novell BranchManager for NT is designed for NT branch offices and departments.

## COMPONENT OVERVIEW

- *NDS™ for NT 2.01* provides management of NT domains by moving Domain objects, such as Users and Groups, to NDS. This relocation is transparent to the user and to applications running on the NT server. The NT ZENworks server can also become an NDS Server object in NDS and hold replicas of the NDS database.
- *ZENworks™ 1.1* is a desktop management tool powered by NDS that lets you deliver and manage applications, configure desktops, and remotely repair workstation software problems using NDS.
- *ManageWise® Agent™ for Windows NT 2.6* monitors CPU utilization, memory usage, network traffic, and historical network usage. You can view this information and manage your server from a ManageWise Console.
- *BorderManager™ Authentication Services 3.0* enables remote users to dial in to NetWare networks and access network information and resources. BMAS maintains security by requiring users to authenticate using the RADIUS protocol.



**MINIMUM REQUIREMENTS**

- NT Server 4.0 with Service Pack 1, 3, or 4. The NT server must be running on an NT file system (NTFS) in order to create a replica.
- You cannot install NDS for NT 2.01 on an NT server 3.51.
- 64 MB RAM.
- 90 MB of available disk space on the NT server. Add 15 MB per 1,000 users in each replica and 175 MB for ZENworks.
- Administrative rights to the NT server and to all portions of the NDS tree that will contain User objects that are domain-enabled. For the first NDS for NT installation, you'll need administrative rights to the root of the tree to extend the schema.
- Administrative rights to the container where you install ZENworks.
- NetWare 4.11 server with Support Pack 6 or higher, NetWare 4.2, or NetWare 5 server with Consolidated Support Pack 1.
- Microsoft\* Exchange 5.0 with Service Pack 1.0 or Exchange 5.5 to run Mailbox Manager for Exchange.
- For NDS-to-domain password synchronization, the user must be running Novell Client™ for Windows 95 3.0 or higher or Windows NT 4.5 or higher while changing the password.

**NETWORK ACCESS SERVER REQUIREMENTS**

- TCP/IP
- RADIUS compliant
- RADIUS authentication enabled
- RADIUS server address set to the NT server on which the BorderManager Authentication Services software is installed
- RADIUS shared secret established and known
- SNMP service installed

**DEPLOYMENT RECOMMENDATIONS**

- You should reinstall the Service Pack after installing the ManageWise Agent and the SNMP service to make sure all files are the most current and all components are updated.
- An NT 3.51 server can reside in the domain but cannot be a PDC or BDC.
- Once you have installed NDS for NT 2.01 on the PDC, your NDS for NT 2.0 servers will continue to run. You must, however, upgrade all of your BDCs to NDS for NT 2.01 as soon as possible. After upgrading your NDS for NT software, you cannot revert to version 2.0.
- Do not update the Novell 4.6 client that is installed on the NT server. It is compatible with ZENworks.
- Make sure you have installed the latest drivers for your network board and other components that might not be included with your NT Server software.

# Installing Novell BranchManager for NT



1. Insert the Novell® BranchManager™ for NT CD. To print a copy of this Quick Start, click Start Here.
2. Quick Starts are available from the installation screens of each Novell BranchManager for NT component. We recommend you print each Quick Start for help in installing and setting up the components.

## INSTALL NDS FOR NT

1. NDS™ for NT must be installed first. Click NDS for NT on the Novell BranchManager for NT installation screen.
2. Click NDS for NT on the NDS for NT installation screen.
3. After you have completed the first portion of the NDS for NT installation, click Admin to install NetWare® Administrator and NDS manager.

## INSTALL AND CONFIGURE BMAS

1. To install BMAS documentation, click Install Documentation on the BMAS installation screen.

2. To view installation instructions, click View Documentation on the BMAS installation screen.
3. Click BMAS to install BorderManager™ Authentication Services.
4. If you are asked if you want to overwrite SNAPIN32.DLL, click NO.
5. When you are prompted for a license, use the license diskette in the box.
6. Configure the Windows\* NT startup parameters for BMAS by opening the NT Control Panel. Double-click Services > BorderManager Authentication Service. From Log On As > This Account, select Administrator > enter the Administrator password
7. Before configuring BMAS, the Dial Access System must have been created and configured. To configure BMAS, click the Start Menu > Programs > BMAS. The Dial Access System should already be created and configured.
8. Click BorderManager Authentication Service SCM > Options > Customize > General.
9. Type the NDS tree name and the distinguished name of a user with administrative rights to authenticate to the NDS tree.
10. Type the password for the user referred to in Step 9. The login name password must be the same as the Dial Access System password.
11. Type the distinguished name of the Dial Access System object to be used for remote authentication.
12. Type the number of threads > click OK.
13. To start BMAS, click Control Panel > Services.
14. Click BMAS > Start.

**MANAGEWISE AGENT FOR NT**

Install BranchManager components and other services in the following order:

1. Install the SNMP Service.
2. Next, install Microsoft Service Pack 4.
3. Install NDS for NT.
4. Install the ManageWise NT Agent.
5. When prompted, insert the license diskette.

If you have previously installed a ManageWise<sup>®</sup> 2.6 Console you can administer the ManageWise Agent for NT from the Console.

6. Insert the Novell BranchManager CD-ROM on the ManageWise Console machine.
7. Click ManageWise.
8. Select Install Console Software on your ManageWise Console.
9. From ManageWise Console, click View > All > Windows NT Servers.

**ZENWORKS**

Prior to installing ZENworks to an NT server,

1. A fully synchronized NDS replica must be installed on the targeted NT server using the NDS for NT install.
2. A “SYS” share must be created on the targeted NT server. To create a “SYS” share, install the administration utilities from the NDS for NT installation screen.

3. Authenticate to the target NT server using the NDS name. To establish a NetWare connection to the NT server, double-click NetWork Neighborhood. Select Entire Network > NetWare Servers. Select the NT server. The NDS name will have an “-NT” after the name if the default was selected during the NDS for NT installation.
4. To determine whether a NetWare connection has been established to the NT server, right-click NetWork Neighborhood. Select NetWare Connections. Check for the NT server name in the list of NetWare connections.
5. A drive must be mapped to the “SYS” share on the target NT server. Double-click Network Neighborhood > double-click the NT server name. Right-click the SYS name and select Map Network Drive.
6. To use ZENworks on your clients, install the ZENworks client with the Workstation Manager option enabled. Use Custom Install to find the option.

The ZENworks client must be installed at a Windows 95 or Windows NT workstation, not the NT server where NDS for NT is installed.

**PRODUCT DOCUMENTATION**

*ZENworks:* Use the ZENworks Installation (CLNT\_QS.PDF) located on this CD. Additional help is available when you click the Help button in any dialog box. You can also go to <http://www.novell.com/coololutions/zenworks> for more information.

*BorderManager Authentication Services:* Install and view the documentation from the BMAS installation screen. Click the Help button on any dialog box for help related to that dialog box.

*NDS for NT 2.01:* Use the Quick Start on this CD for help installation (QUICKST.PDF). Additional documentation is contained in online help which you can access from the Help menu.

*ManageWise Agent for NT Server:* ManageWise documentation is available in Adobe\* Acrobat\* format. You can access it from <http://www.novell.com/documentation/mw26.html>.

*License Agreement:* To print a copy of the license agreement, open DOCS\EULA\LICENSE.PDF on the installation CD.

**Trademarks and Copyright**

Novell, NetWare, ManageWise, and ZENworks are registered trademarks of Novell, Inc. in the United States and other countries. BorderManager, BranchManager, ManageWise Agent, NDS, NDS Manager, NetWare Loadable Module and NLM, NetWare/IP, and Novell Client are trademark of Novell, Inc.

All third-party trademarks are the property of their respective owners.

Copyright © 1999 Novell Inc. All rights reserved.