

# Setting Up NetWare Printing

NetWare® 4™ print services is based on the creation and linking of three components: printers, print queues, and print servers. Administrators create and link print queues, printers, and print servers; then users submit print jobs to the queues.

## PREREQUISITES

- Install NetWare 4.2 on your server.
- Set up a network workstation.
- Set up a printing environment.
- Cable the printers: to a workstation, directly to the network, or to a NetWare 4 server.

## QUICK SETUP USING PCONSOLE

This Quick Setup method uses the PCONSOLE utility. You can use NetWare Administrator if preferred (see the next section).

1. As user Admin, access PCONSOLE.
2. If necessary, select Change Context and enter the desired context, or press Insert to browse for a context.
3. Select Quick Setup.
4. In the Print Server field, type a printer name.
5. In the New Printer field, type a printer name.

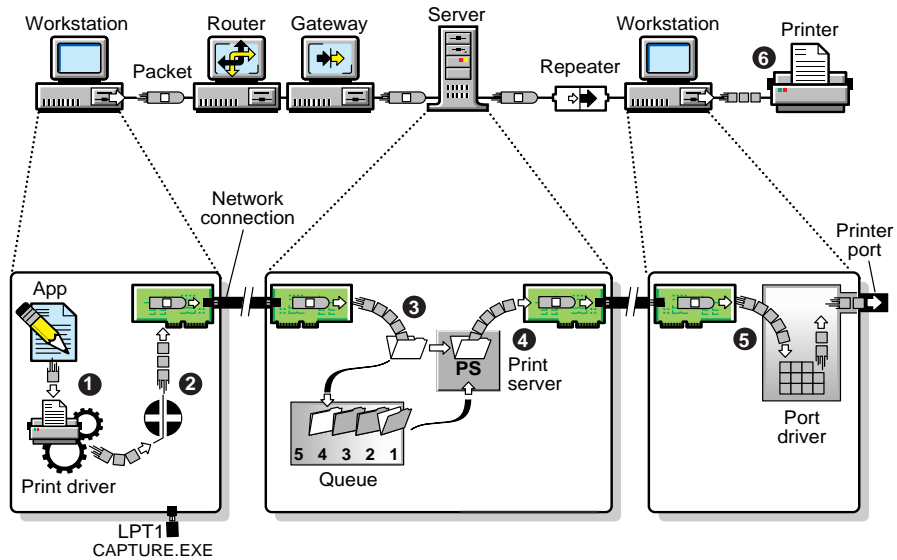
6. In the New Print Queue field, type a print queue name.
7. (Optional) In the Print queue volume field, press Enter and then press Insert to browse for a volume.
8. Press F10 to save the changes.
9. Load PSERVER.NLM at the server console.
  - 9a. Enter `load pserver` and press Enter at the console.
  - 9b. Press Enter to browse for a printer.
10. Load the port driver. Printers use NPRINTER.EXE for workstations and NPRINTER.NLM for NetWare 4 servers.

## QUICK SETUP USING NETWARE ADMINISTRATOR

This Quick Setup method uses NetWare Administrator.

1. As user Admin, access NetWare Administrator.
2. Choose the Container object for which you want to set up printing.
3. From the Tools menu, choose Print Services Quick Setup.
4. In Print Server name, type a name for this Print Server object (or browse to an existing print server).
5. In Printer Name, type a name for this Printer object.

6. In Printer Type, type or choose a printer type, and then complete the type-specific dialog box that appears.
7. In the Print Queue Name, type a name for this Print Queue object.
8. In Print Queue Volume, type a name for this Print Queue volume.
9. Choose Create.
10. Load PSERVER.NLM at the server console.
  - 10a. Enter **load pserver** and press **Enter** at the console.
  - 10b. Press **Enter** to browse for a printer.
11. Load the port driver. Printers use NPRINTER.EXE for workstations and NPRINTER.NLM for NetWare 4 servers.



- Step 1** Print data is generated and transmitted.
- Step 2** Data is redirected to a network queue.
- Step 3** Data is stored in a print queue.
- Step 4** Print data is transmitted to a printer station.
- Step 5** Print data is transmitted to the printer.
- Step 6** The printer formats the data and completes the print job.