

*Appendix A* **Graphic View of Object Class Definitions**

Overview .....	A-2
Graphic View Index .....	A-2
Graphic View Diagrams .....	A-4

## Overview

The purpose of this appendix is to provide a graphic view of the base NDS™ schema, showing the object classes, super classes, and inheritance. Each object class is represented by a box that contains the name of the object class, its immediate super class, and a listing of the containment rules and attributes that are defined for that object class. This view does not show the default ACL templates, nor does it provide comments about the attributes.

In this view, the object class that is placed above another object class is its super class. The object classes that are below another object class are its subordinates. An object class inherits the rules and the attributes defined by all of its super classes, but they do not inherit from their subordinates. The arrows show the direction of flow for inheritance.

Each object class has the following information listed:

- Effective/Non-effective status
- Subclass Of (immediate super class)
- Contained By classes
- Named By attributes
- Must Contain attributes (Mandatory)
- May Contain attributes (Optional)

## Graphic View Index

Table A.1 provides a quick index to the object classes in the graphic views that follow. Both the figure number(s) and page number(s) are given to facilitate easy location of the object class you may be looking for.

**Table A.1**  
**Graphic View Index**

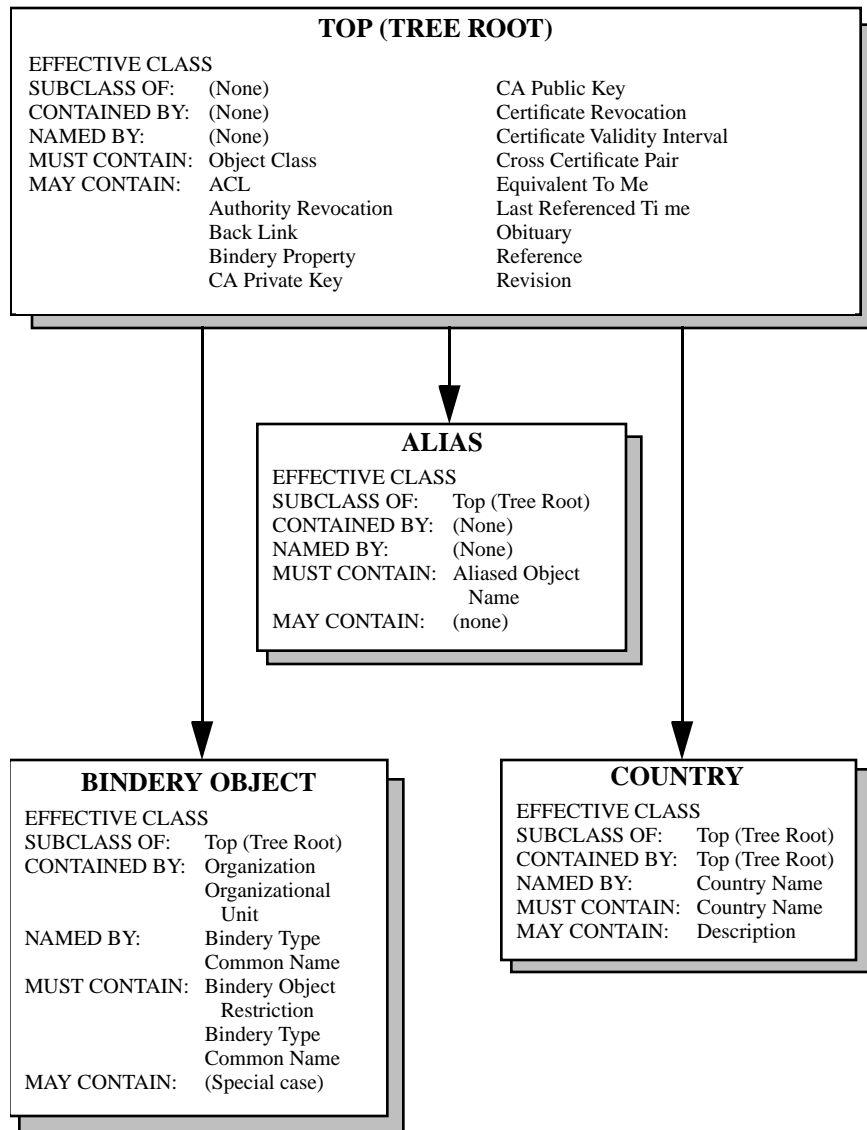
<b>Object Class</b>	<b>Figure</b>	<b>Page Number</b>
AFP Server	Figure A.10	page 13
Alias	Figure A.1	page 4
Bindery Object	Figure A.1	page 4
Bindery Queue	Figure A.8	page 11
Comm Exec	Figure A.11	page 14
Computer	Figure A.7	page 10
Country	Figure A.1	page 4
Device	Figure A.7	page 10
Directory Map	Figure A.9	page 12
External Entry	Figure A.2	page 5

**Table A.1**  
**Graphic View Index** *continued*

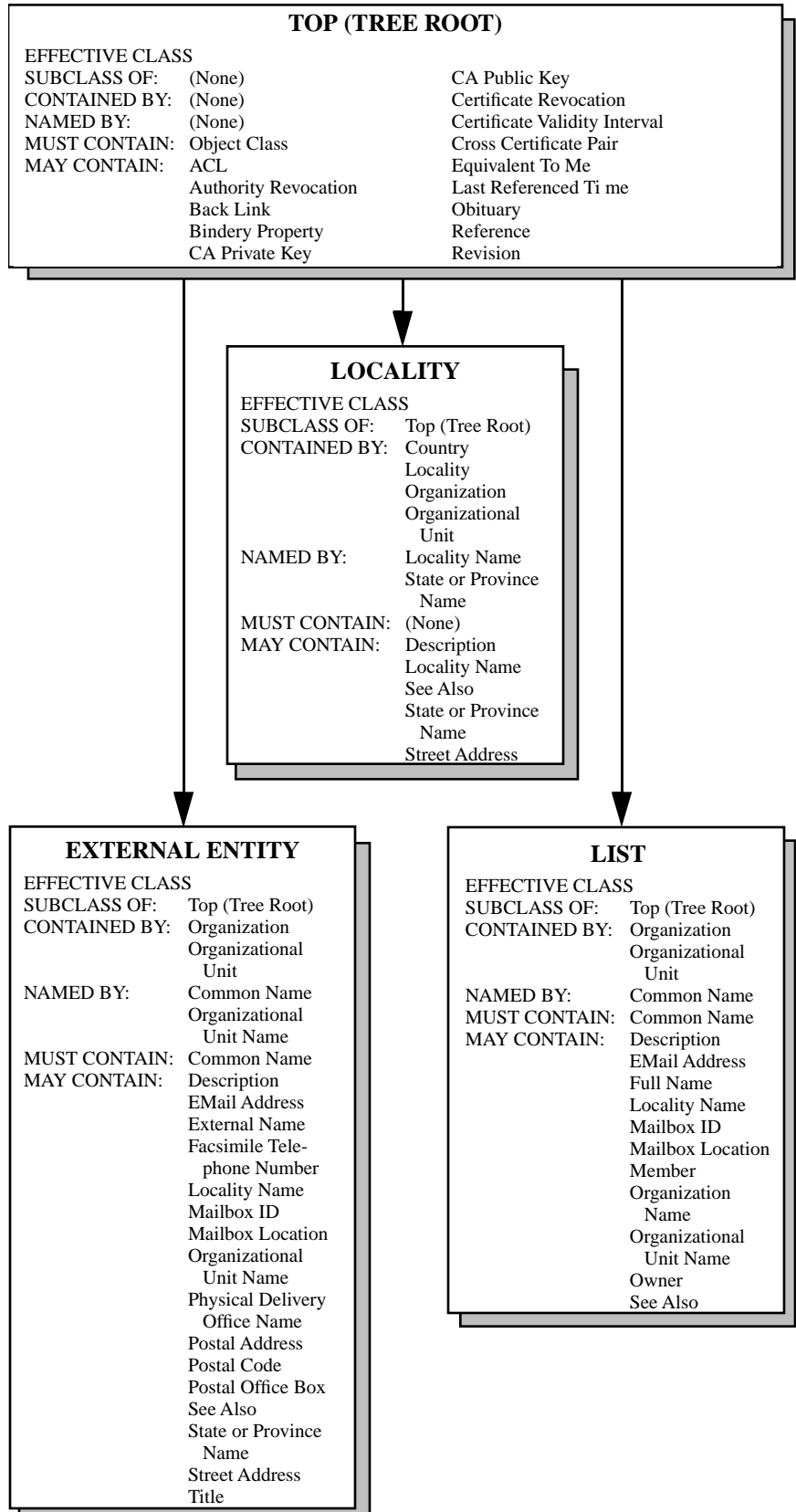
<b>Object Class</b>	<b>Figure</b>	<b>Page Number</b>
Group	Figure A.5	page 8
List	Figure A.2	page 5
Locality	Figure A.2	page 5
Message Routing Group	Figure A.5	page 8
Messaging Server	Figure A.11	page 14
NCP Server	Figure A.10	page 13
Organization	Figure A.3	page 6
Organizational Person	Figure A.6	page 9
Organizational Role	Figure A.3	page 6
Organizational Unit	Figure A.4	page 7
Partition	Figure A.5	page 8
Person	Figure A.6	page 9
Printer	Figure A.7	page 10
Print Server	Figure A.10	page 13
Profile	Figure A.4	page 7
Queue	Figure A.8	page 11
Resource	Figure A.8, Figure A.9	page 11, page 12
Server	Figure A.10, Figure A.11	page 13, page 14
Top, Tree Root	Figure A.1- Figure A.11	page 4- page 14
Unknown	Figure A.4	page 7
User	Figure A.6	page 9
Volume	Figure A.9	page 12

# Graphic View Diagrams

**Figure A.1**  
**Top (Tree Root), Alias, Bindery Object and, Country Classes**



**Figure A.2**  
**Top (Tree Root), External**  
**Entity, List and, Locality**  
**Classes**



**Figure A.3**  
**Top (Tree Root), Organization, and Organizational Role Classes**

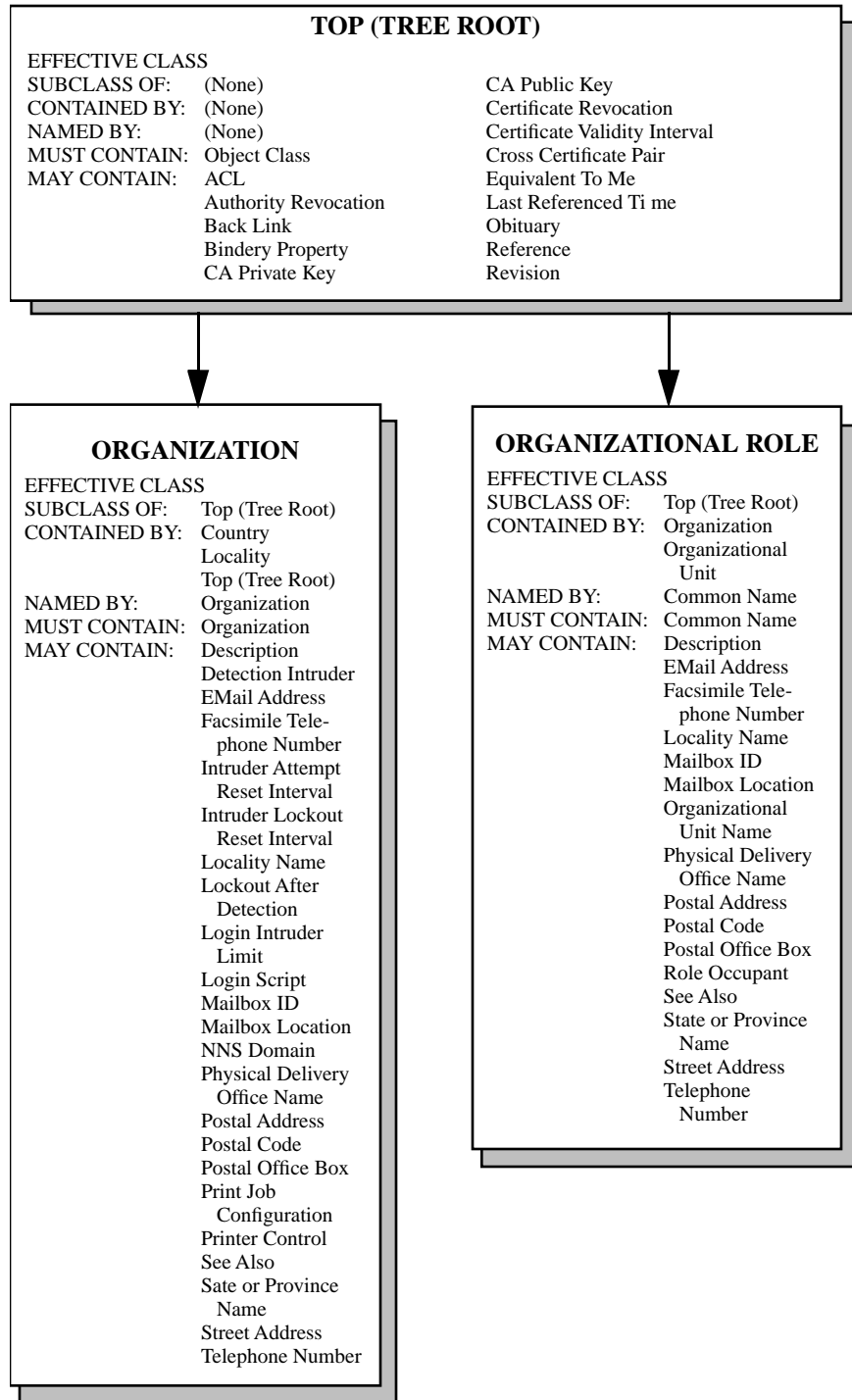
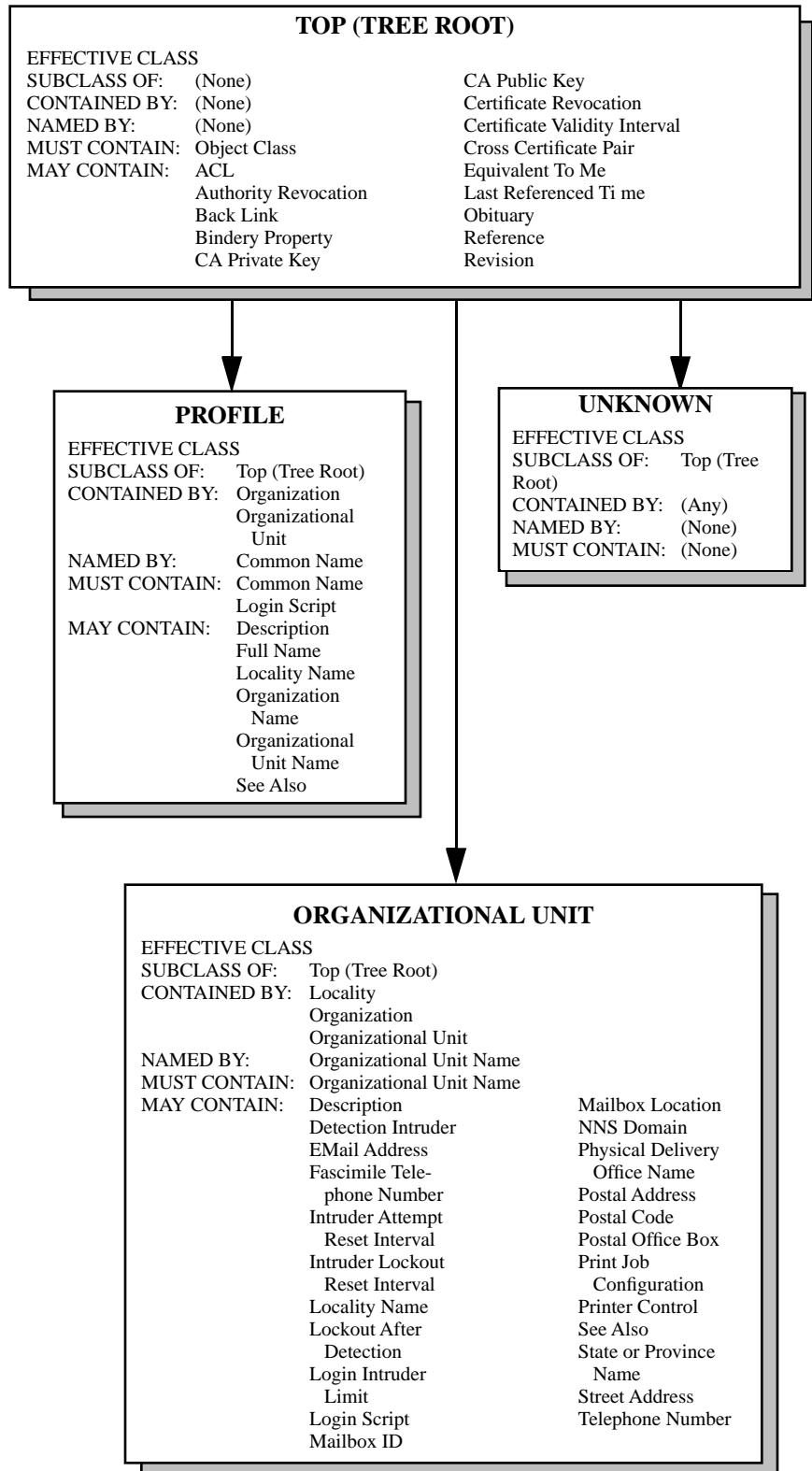
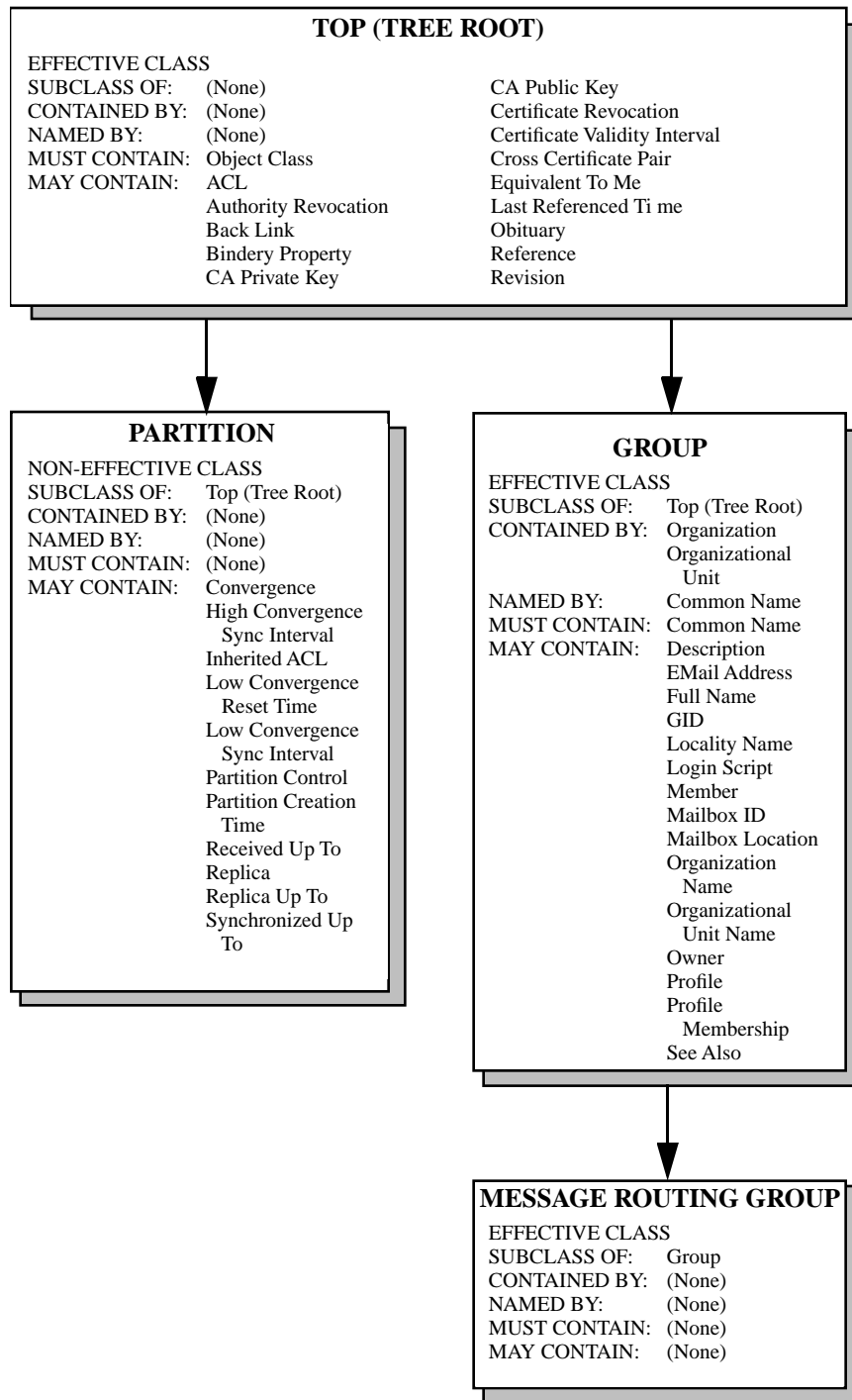


Figure A.4  
**Top (Tree Root), Organizational Unit, Profile, and Unknown Classes**

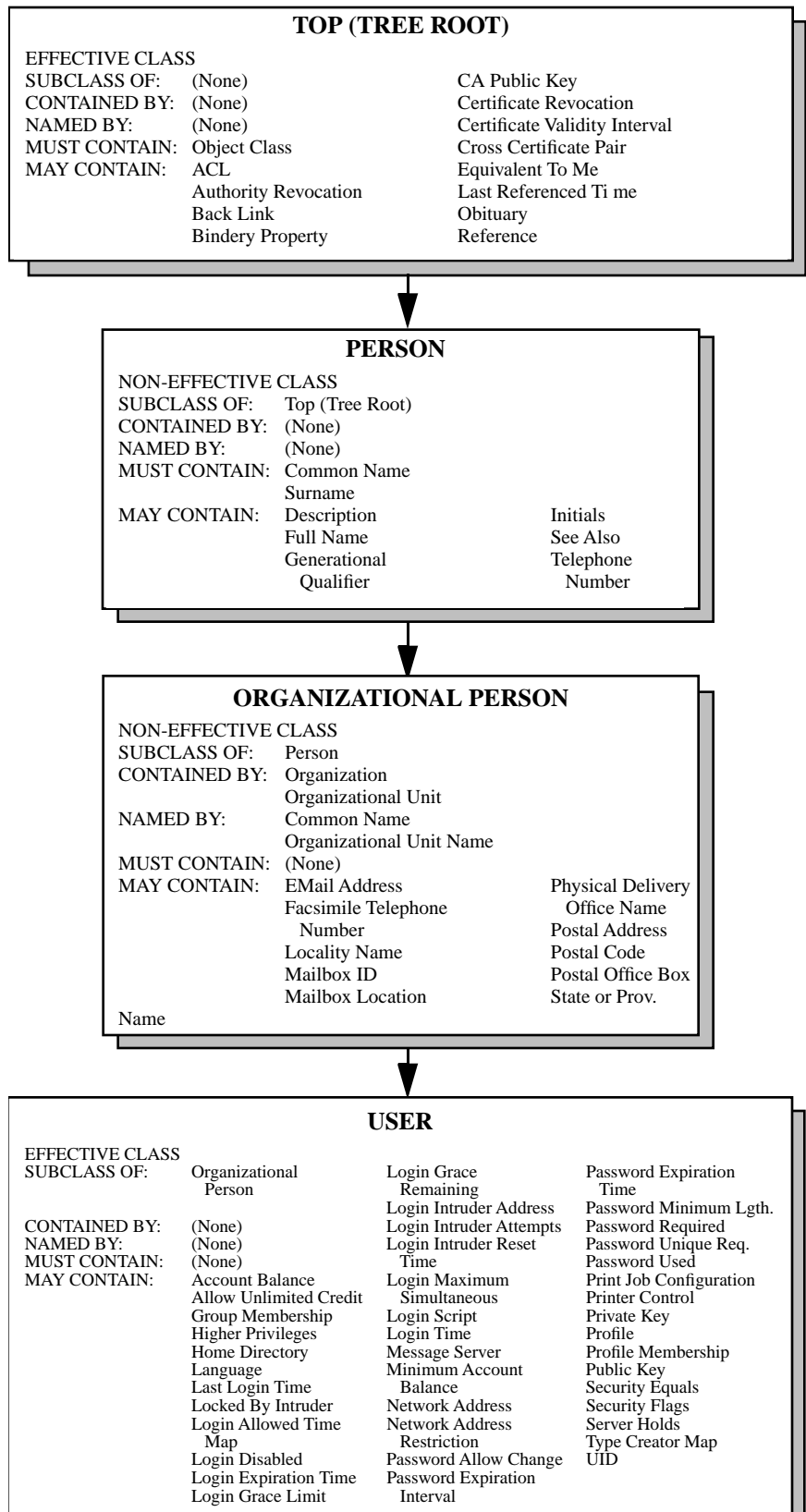


**Figure A.5**  
**Top (Tree Root), Partition,**  
**Group, and Message Routing**  
**Group Classes**





**Figure A.6**  
**Top (Tree Root), Person,**  
**Organizational Person, and**  
**User Classes**



**Figure A.7**  
**Top (Tree Root), Device,**  
**Computer, and Printer**  
**Classes**

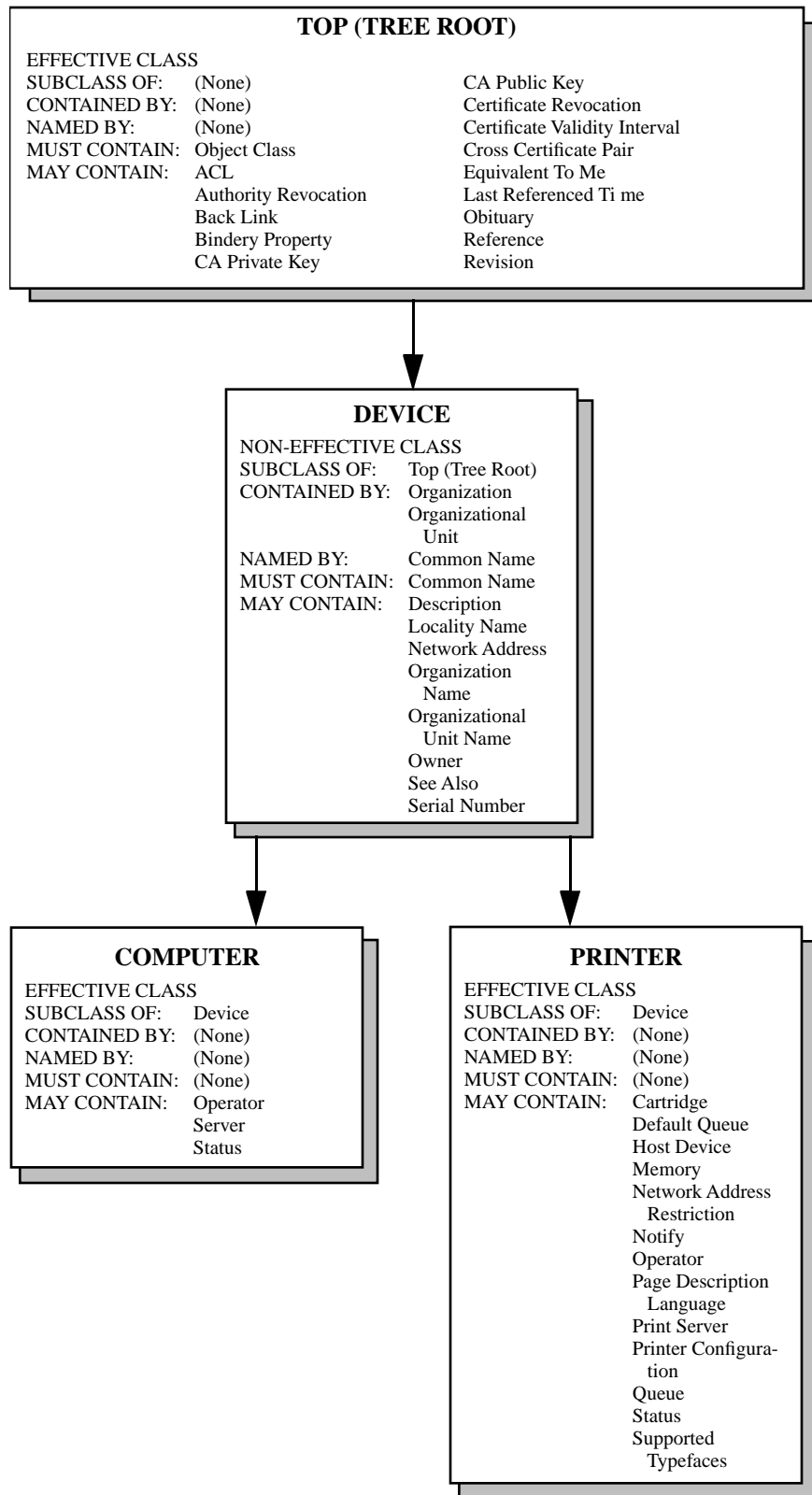
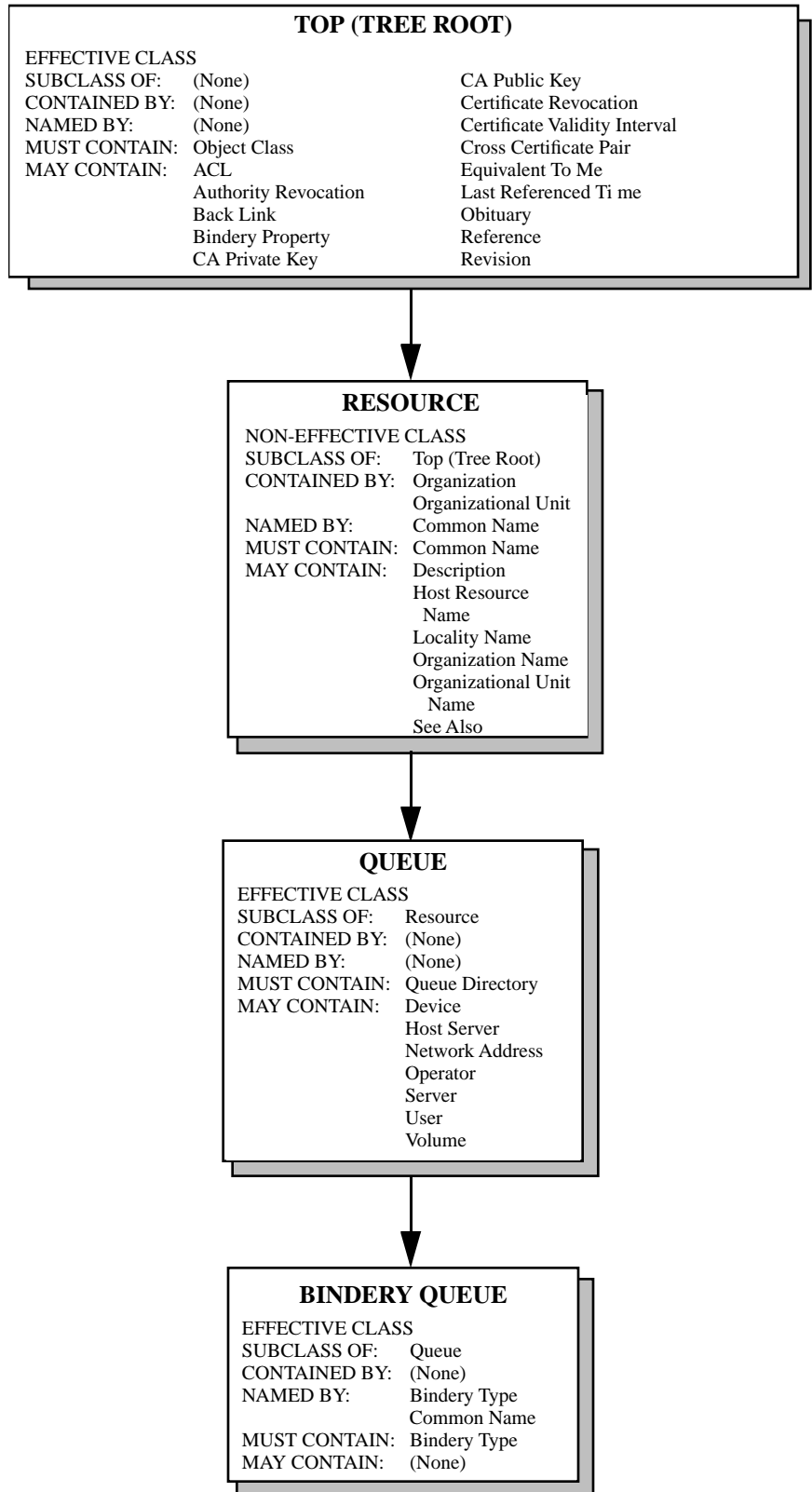


Figure A.8  
 Top (Tree Root), Resource,  
 Queue, and Bindery Queue  
 Classes



**Figure A.9**  
**Top (Tree Root), Resource,**  
**Directory Map, and Volume**  
**Classes**

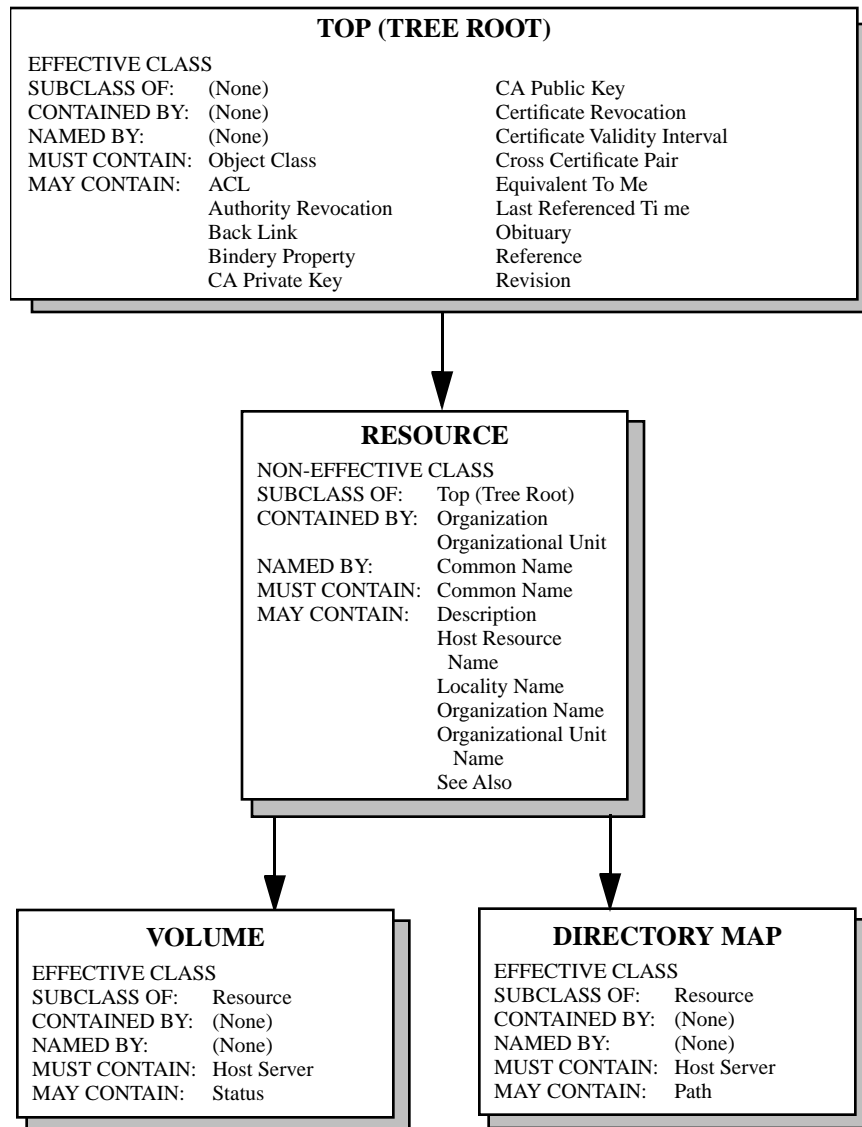
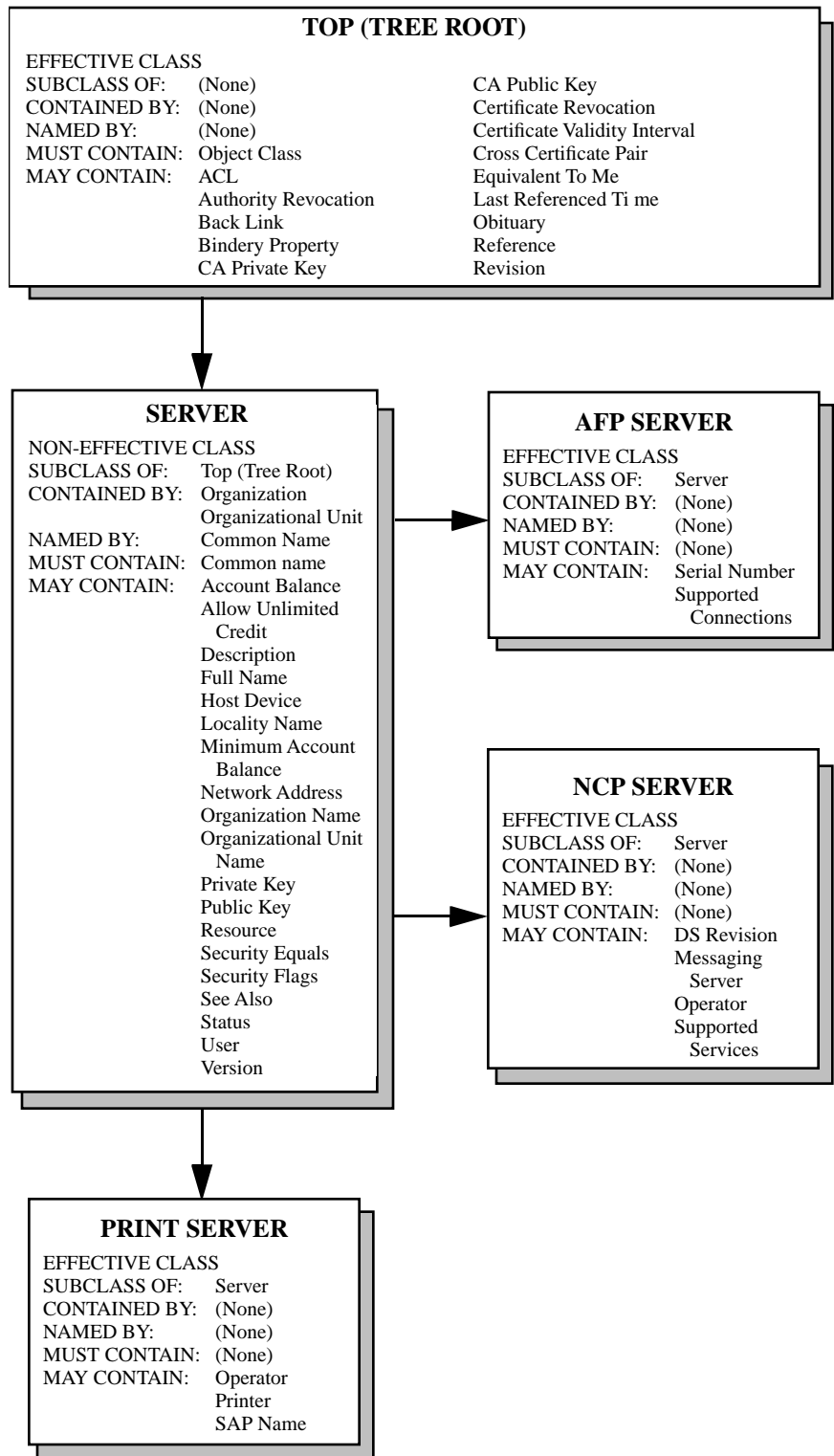


Figure A.10  
 Top (Tree Root), Server, AFP  
 Server, NCP Serve, and Print  
 Server Classes



**Figure A.11**  
**Top (Tree Root), Server,**  
**Comm Exec, and Messaging**  
**Server Classes**

