

[The Complete] Management Solution  
For Your Network

PRODUCT MANUAL

## ManageWise™ 2.5

NetWare LANalyzer® Agent™ 1.2  
Installation and Administration Guide



ManageWise™  
MANAGEMENT SOFTWARE

# Novell®

*disclaimer*

Novell, Inc. makes no representations or warranties with respect to the contents or use of this manual, and specifically disclaims any express or implied warranties of merchantability or fitness for any particular purpose. Further, Novell, Inc. reserves the right to revise this publication and to make changes to its content, at any time, without obligation to notify any person or entity of such revisions or changes.

Further, Novell, Inc. makes no representations or warranties with respect to any NetWare software, and specifically disclaims any express or implied warranties of merchantability or fitness for any particular purpose. Further, Novell, Inc. reserves the right to make changes to any and all parts of NetWare software, at any time, without any obligation to notify any person or entity of such changes.

*trademarks*

Novell, Inc. has attempted to supply trademark information about company names, products, and services mentioned in this manual. The following list of trademarks was derived from various sources.

Novell and NetWare are registered trademarks of Novell, Inc. in the United States and other countries.

The Novell Network Symbol, Internet Packet Exchange, IPX, IPX/SPX, ManageWise, NDS, NetWare 3, NetWare 4, NetWare Directory Services, NetWare DOS Requester, NetWare Loadable Module, NetWare MHS, NetWare Message Handling System, NLM, Novell Directory Services, Sequenced Packet Exchange, SMS, SPX, Virtual Loadable Module, and VLM are trademarks of Novell, Inc.

Apple, AppleLink, AppleTalk, LocalTalk, Macintosh, and Power Macintosh are registered trademarks and Apple Desktop Bus is a trademark of Apple Computer, Inc. CompuServe is a registered trademark of CompuServe Incorporated. NetPort and SatisFAXtion are registered trademarks and

**Copyright © 1993–97 Novell, Inc. All rights reserved. No part of this publication may be reproduced, photocopied, stored on a retrieval system, or transmitted without the express written consent of the publisher.**

**Novell, Inc.  
2180 Fortune Drive  
San Jose, CA 95131**

**ManageWise™ 2.5**

**NetWare LANalyzer® Agent™ 1.2 Installation and Administration Guide  
October 1997**

**Part Number: 100-002915-001C**

StorageExpress is a trademark of Intel Corporation. IBM, OS/2, PC/AT, and PS/2 are registered trademarks and PC/XT is a trademark of International Business Machines Corporation. LANSpool is a registered trademark of LAN Systems, Inc. Microsoft, MS-DOS, and Windows are registered trademarks and Windows NT and Windows 95 are trademarks of Microsoft Corporation. NuBus is a trademark of Texas Instruments Incorporated.

# Contents

<b>1</b>	<b>Installing the NetWare LANalyzer Agent Software</b>	
	Before You Begin . . . . .	2
	About NetWare LANalyzer Agent . . . . .	2
	Functionality Added to ManageWise . . . . .	3
	Installation Requirements . . . . .	3
	Installing the NetWare LANalyzer Agent Software . . . . .	4
	Installing from Your Workstation to Remote Servers . . . . .	5
	Installing from the Server Console . . . . .	9
	Completing the Installation Procedure . . . . .	11
	Reviewing the AUTOEXEC.NCF File . . . . .	12
	Reconciling the NCF Files . . . . .	14
	Enabling the NetWare LANalyzer Agent Installation . . . . .	15
	Bringing Down and Restarting a NetWare 4.1x Server . . . . .	15
	Bringing Down and Restarting a NetWare 3.12 Server . . . . .	16
	Deinstalling NetWare LANalyzer Agent Software . . . . .	16
	Results of Deinstalling NetWare LANalyzer Agent . . . . .	17
<b>2</b>	<b>Improving NetWare LANalyzer Agent Performance</b>	
	Contents of the LANZ.NCF File . . . . .	20
	Modifying the LANZ.NCF File . . . . .	22
	Turning on the LANZ Control Screen . . . . .	23
	Disabling Packet Capture . . . . .	23
	Setting Packet Flow Control . . . . .	23
	Setting the Upper Limit of Available Memory . . . . .	24
	Purging Data from Server Memory . . . . .	24
	Sorting Concurrent Top Stations . . . . .	25
	Sending Alarms to ManageWise Consoles Automatically . . . . .	26
	Polling Source Route Bridges . . . . .	26
	Activating Changes in the LANZ.NCF File . . . . .	27
<b>3</b>	<b>Using the NetWare LANalyzer Agent Console Utility</b>	
	Loading the NetWare LANalyzer Agent Console Utility . . . . .	30
	Enabling or Disabling Network Adapter Monitoring . . . . .	31

Viewing Network Adapter Information . . . . .	32
Viewing the Agent Items Status . . . . .	34
Accessing Detailed Information About Each Item . . . . .	37
Viewing the Token Ring RMON MIB Information . . . . .	37
Viewing Statistics Information . . . . .	38
Viewing History Information . . . . .	39
Viewing Host Information . . . . .	40
Viewing Matrix Information . . . . .	42

## **A Troubleshooting Information**

Troubleshooting the Installation . . . . .	45
Adapter Monitoring Messages . . . . .	47

## **Index**

## ***Installing the NetWare LANalyzer Agent Software***

The NetWare® LANalyzer® Agent™ product is a distributed network analyzer that complements the ManageWise software. While other ManageWise agents collect data about specific network nodes such as servers or hubs, NetWare LANalyzer Agent observes the interaction among these nodes on a specific LAN segment. The agent is installed on a NetWare server.

NetWare LANalyzer Agent 1.2 operates with NetWare 3.12, NetWare 4.1, and later.

The following topics are discussed in this chapter:

---

**Section and Page Number**

---

“Before You Begin” on page 2

“About NetWare LANalyzer Agent” on page 2

“Installation Requirements” on page 3

“Installing the NetWare LANalyzer Agent Software” on page 4

“Reviewing the AUTOEXEC.NCF File” on page 12

“Reconciling the NCF Files” on page 14

“Enabling the NetWare LANalyzer Agent Installation” on page 15

“Deinstalling NetWare LANalyzer Agent Software” on page 16

---

## Before You Begin

Before you begin to install NetWare LANalyzer Agent 1.2, you must complete one of the following tasks:

- Install ManageWise™ 2.5 software.

ManageWise 2.5 automatically installs the 1.2 version of NetWare LANalyzer Agent.

- If you are upgrading from NetWare LANalyzer Agent 1.1, then download the update from the the Novell Web site at <http://support.novell.com> web site.

## About NetWare LANalyzer Agent

The NetWare LANalyzer Agent component of the ManageWise product family is a distributed analysis tool for large network segments. NetWare LANalyzer Agent monitors all the network segments connected to the NetWare server on which it runs. You can use NetWare LANalyzer Agent to monitor multiple network segments.

NetWare LANalyzer Agent monitors the network segment for problems, such as high network utilization, communication errors, or duplicate IP addresses. When any error condition is detected, the agent sends an alarm (also called a *trap*) to the ManageWise Console.

To monitor all your network segments from the ManageWise Console or from a third-party Simple Network Management Protocol (SNMP)-based network management station, you must install the NetWare LANalyzer Agent software on a NetWare 3.12, NetWare 4.1 or later server for each segment you want to monitor.

You need only one NetWare LANalyzer Agent on each network segment you want to monitor. A single ManageWise Console can manage all NetWare LANalyzer Agent software on your network. You can also have additional ManageWise Consoles manage specific network segments.

## Functionality Added to ManageWise

NetWare LANalyzer Agent adds the following functionality to ManageWise:

- ◆ Discovers all the nodes on each segment that it monitors, regardless of the network protocol in use
- ◆ Monitors the performance on the segment and provides the ManageWise Console with dynamic performance data for one or more segments to which the NetWare server is attached
- ◆ Makes it easy to set alarm thresholds on many useful variables for proactive network management
- ◆ Captures all or selected packets to assist you in diagnosing and resolving problems on the monitored networks

## Installation Requirements

To install NetWare LANalyzer Agent, the following requirements must be met:



- A NetWare server with NetWare 3.12, NetWare 4.1 or later installed and configured for an Ethernet and/or token ring network.
- ManageWise 2.5 installed on the NetWare server.
- The RAM requirement for a NetWare LANalyzer Agent server is  
$$N/2 + 1.5 \text{ MB}$$
where  $N$  is the number of monitored adapters. For example, if the agent monitors two adapters, it requires 2.5 MB of RAM.
- At least 10 MB of free disk space on the server to install the agent.



- To capture one year of trend data, at least 25 MB of free disk space on the server for each monitored Ethernet adapter, and at least 50 MB of disk space on the server for each monitored token ring adapter.
- The ManageWise Console must be able to access the NetWare server over the network.
- LAN drivers already installed on the NetWare server.
- Promiscuous mode LAN drivers for the network adapters.

NetWare LANalyzer Agent requires promiscuous mode drivers to monitor segment traffic and capture packets addressed to various nodes on each segment.

## Installing the NetWare LANalyzer Agent Software

Skip this section if you are installing NetWare LANalyzer agent with ManageWise 2.5. ManageWise 2.5 automatically installs NetWare LANalyzer Agent 1.2. Installing the standalone NetWare LANalyzer Agent software consists of four main tasks:



- Installing the NetWare LANalyzer Agent files  
You can install the agent from your workstation or from the server console.
- Reviewing the AUTOEXEC.NCF file  
Review this file to make sure the changes made during installation are correct for your network configuration.
- Reconciling the AUTOEXEC.NCF and NMSBASE.NCF files  
You must ensure that these two NCF files are consistent.
- Bringing down and restarting the server  
Once you install the NetWare LANalyzer Agent software, you must restart the server. If your server is not configured to restart automatically when brought down, you must restart it at the server console. See “Enabling the NetWare LANalyzer Agent Installation” on page 15 for detailed instructions.

To install the NetWare LANalyzer Agent files from your workstation to one or more servers on the network, refer to the next section, “Installing from Your Workstation to Remote Servers.” To install the files from the server console, refer to “Installing from the Server Console” on page 9.

All files that are overwritten during the installation procedure are backed up in the SYS:\SYSLZ\NLM.SAV directory. You can also consult the SYS:\LANZ\INSTALL.LOG file for information about the installation.

## Installing from Your Workstation to Remote Servers

To use Remote Console (RCONSOLE) to install NetWare LANalyzer Agent from your workstation to one or more remote servers, complete the following tasks:

Checklist



- Verify that the REMOTE and RSPX NetWare Loadable Module™ (NLM™) files are loaded on the servers you are installing the product on.
- Access the server you are installing NetWare LANalyzer Agent on by running RCONSOLE.EXE from the workstation.

For detailed information about RCONSOLE, refer to the NetWare documentation.

To install NetWare LANalyzer Agent from your workstation to a remote server, follow these steps:

Procedure



### 1. Log in to the network.

Ensure that you have write rights to the volume on the target server.

#### 1a. If you are logging in to a NetWare 4™ network, type

```
LOGIN username <Enter>
```

#### 1b. If you are logging in to a NetWare 3™ server, type

```
LOGIN servername/username <Enter>
```

Enter your password when prompted.

### 2. Make sure you have a drive mapped to the directory where the RCONSOLE.EXE file is located (usually SYS:SYSTEM).

**3. Map a drive to a server volume.**

For example, if the newly mapped drive is to be G:, the MAP command would be as follows:

```
MAP G:=servername\volume_name:
```

**4. Go to the mapped drive and create a directory called LANZ12.**

**5. Copy the contents of both installation diskettes into the LANZ12 directory.**

You can use the following command to copy the files from your drive (A: in the following example) to subdirectories on the mapped drive:

```
XCOPY A:\*.* \LANZ12 /s/v
```

The /s parameter copies files in the source directory and all subdirectories below the source. The /v parameter verifies that each disk sector is written correctly.

Repeat this procedure for the second NetWare LANalyzer Agent diskette.

**6. Invoke the RCONSOLE utility at the workstation prompt:**

```
RCONSOLE <Enter>
```

The Connection Type menu is displayed.

**7. Select SPX, then press <Enter>.**

The Available Servers list is displayed.

**8. Select the server you want to install to, then press <Enter>.**

If prompted for a password, enter the password.

The server console is displayed.

**9. If you have a previous version of the NetWare LANalyzer Agent on the server, then unload it by issuing the ULANZ command at the server prompt.**

The previous version of the agent must be unloaded from the server before the installation procedure for NetWare LANalyzer Agent 1.2 can proceed.

**10. Enter the following command:**

`LOAD INSTALL`

The Installation Options menu appears. The menu that the Installation utility displays depends on whether you are on a NetWare 3.12 server or a NetWare 4.1x server.

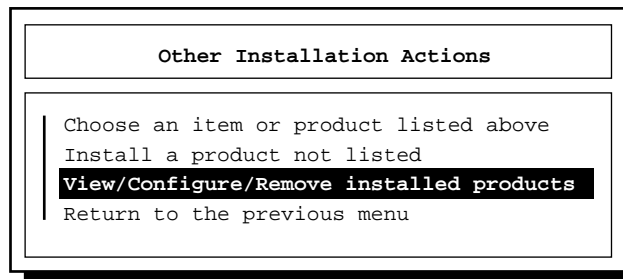
**11. Select *Product options*.**

- ◆ On a NetWare 3.12 server, the Currently Installed Products list appears. If you already have other products installed, their names and version numbers are displayed.

**Proceed to Step 12 on page 7.**

- ◆ On a NetWare 4.1x server, the Other Installation Actions menu is displayed (see Figure 1-1).

**Figure 1-1  
Other Installation  
Actions Menu**



**Select *View/Configure/Remove installed products*.**

The Currently Installed Products list appears.

The remaining installation screens are identical for NetWare 3.12 and NetWare 4.1x.

**12. Press <Insert>.**

NetWare 4.1x servers display the following prompt:

```
Product will be installed from A:\. If you are installing from
floppy, insert the first diskette of the product you want to
install into the drive and verify that the path above is correct.
Press <F3> to specify a different path;
Press <F4> to specify a remote workstation path;
Press <Enter> to continue.
```

**13. Press <F3>.**

You are prompted to specify a directory path.

**14. Enter the volume name and path to the LANZ12 subdirectory, then press <Enter>.**

The path name syntax is as follows:

*volume:\*LANZ12

If the server has multiple adapters installed, the Capable Driver List is displayed, showing the list of promiscuous mode drivers that the agent can monitor (see Figure 1-2).

**Figure 1-2**  
**Capable Driver List**

NetWare LANalyzer Agent Capable Driver List			
NE2000	(06/17/93)	00-00-1B-1A-2F	Ethernet
MADGEODI	(10/21/96)	00-00-F6-0F-8B-DD	Token Ring



NetWare LANalyzer Agent cannot monitor more than one adapter in a Symmetric Multiprocessing (SMP) server. If you are installing on an SMP server, select only one adapter to monitor.

If you want to change which adapter is being monitored on an SMP server, use the LANZCON utility to first disable monitoring of the

previous adapter, then enable monitoring of the new adapter. (See Chapter 3, “Using the NetWare LANalyzer Agent Console Utility,” for detailed instructions.)

15. Proceed to “Completing the Installation Procedure” on page 11.

## Installing from the Server Console

To install NetWare LANalyzer Agent from the server console, follow these steps:

Procedure



1. Insert *NetWare LANalyzer Agent Disk 1 of 2* in the disk drive.

2. Enter the following command at the server console:

```
LOAD INSTALL
```

The Installation Options menu is displayed.

3. Select *Product options*.

- ◆ On a NetWare 3.12 server, the Currently Installed Products list is displayed. If you already have other products installed, their names and version numbers are displayed.
- ◆ On a NetWare 4.1x server, the Other Installation Actions menu is displayed (see Figure 1-1 on page 7).

**On a NetWare 4.1x server, select *View/Configure/Remove installed products* from the Other Installations Actions menu.**

The Currently Installed Products list is displayed.

**4. From the Currently Installed Products list, press <Insert>.**

You are prompted to enter the path from which NetWare LANalyzer Agent will be installed. The default is drive A:

```
Product will be installed from A:\. If you are installing from floppy, insert the first diskette of the product you want to install into the drive and verify that the path above is correct. Press <F3> to specify a different path; Press <Enter> to continue.
```

**5. If you are installing the product from drive A:, press <Enter>. Otherwise, press <F3> to enter the correct path, then press <Enter>.**

If the server has multiple adapters installed, the Capable Driver List appears, showing the list of promiscuous mode drivers that the agent can monitor (see Figure 1-2 on page 8).



NetWare LANalyzer Agent cannot monitor more than one adapter in a Symmetric Multiprocessing (SMP) server. If you are installing on an SMP server, select only one adapter to monitor.

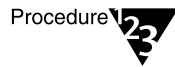
If you want to change which adapter is being monitored on an SMP server, use the LANZCON utility to first disable monitoring of the previous adapter, then enable monitoring of the new adapter. (See Chapter 3, “Using the NetWare LANalyzer Agent Console Utility,” for detailed instructions.)

**6. Continue with the next section, “Completing the Installation Procedure.”**

## Completing the Installation Procedure

When the list of capable drivers is displayed, no drivers are selected. Thus, by default, no adapters are monitored. You must select at least one driver to instruct the NetWare LANalyzer Agent software to monitor that adapter.

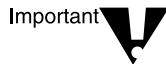
To complete the installation procedure, follow these steps:



- 1. Use the arrow keys to highlight each driver you want to monitor, then press <F5>.**

<F5> is a toggle key. The first time you press <F5>, it selects an item. To select another driver, highlight the driver name, then press <F5>. If you press <F5> a second time on the same item, it deselects the item.

- 2. When you have selected all the drivers you want to monitor, press <Esc>.**



If no adapter drivers support promiscuous mode, exit the installation procedure and replace the adapter, or contact the adapter vendor for a promiscuous mode driver.

If the server is configured with more than one volume, the Installation utility presents a list of the volumes on the server (see Figure 1-3). NetWare LANalyzer Agent can save trend data in one of the listed volumes.

If you are going to save trend data for up to a year, you must reserve a volume on the server for storing the data. To store one year of trend data, the server requires 25 MB of free disk space for each monitored Ethernet adapter, and 50 MB of disk space for each monitored token ring adapter.

**Figure 1-3**  
**List of Server Volumes for Trend Data**

Volume Name	Total Kbytes	Free Kbytes	Required Kbytes
SYS	267800	15750	10500
VOL1	256000	20444	10500
VOL2	256000	20444	10500



3. **Select the server volume for storing trend data, then press <Enter>.**

You are prompted to insert the second installation diskette.

4. **Insert *NetWare LANalyzer Agent Disk 2 of 2* in the disk drive, then press <Esc>.**

The installation procedure is completed. The contents of the INSTALL.TXT file are displayed.

5. **Press <Esc>.**

6. **Read the Final Notes section of the INSTALL.TXT file, then press <Esc>.**



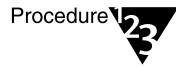
When you are finished with the installation procedure, you might need to run the Internetworking Configuration utility (INETCFG) to update one or more driver names. For example, the name for the NE3200.LAN driver changed to NE3200P.LAN.

## Reviewing the AUTOEXEC.NCF File

The installation procedure for NetWare LANalyzer Agent 1.2 does *not* modify your AUTOEXEC.NCF file. If you were running a previous version of the agent (1.1, 1.0 or 1.0a) before you installed NetWare LANalyzer Agent 1.2, you do not need to modify the file. You need only bring down and restart the server to enable the new version of NetWare LANalyzer Agent. See “Enabling the NetWare LANalyzer Agent Installation” on page 15 for details.

However, if you were not running NetWare LANalyzer Agent 1.0 or 1.0a, or if you specifically “commented-out” the commands in the AUTOEXEC.NCF file that automatically load the agent, you must modify the file accordingly. In addition, Novell recommends that you compare your AUTOEXEC.NCF and NMSBASE.NCF files to make sure they are consistent. See “Reconciling the NCF Files” on page 14 for details.

To check your AUTOEXEC.NCF file, do the following:



1. **If you have not already done so, enter the LOAD INSTALL command at the server prompt.**

The Installation Options menu is displayed.

- ◆ **Under NetWare 3.12, select *System Options*.**

The Available System Options menu appears.

- ◆ **Under NetWare 4.1x, select *NCF files options*.**

The Available NCF Files Options menu appears.

2. **Select *Edit AUTOEXEC.NCF File*.**

The AUTOEXEC.NCF file is displayed.

Figure 1-4 illustrates the statements in the AUTOEXEC.NCF file that are pertinent to NetWare LANalyzer Agent.

**Figure 1-4**  
**NetWare LANalyzer**  
**Agent Statements in**  
**the AUTOEXEC.NCF**  
**File**

```
# $NMSBASE$ DO NOT DELETE THIS LINE
# NetWare Management System installation has
# created the following NMSBASE.NCF file.
# Review the load sequence of the NLMs
# in NMSBASE.NCF.
# Make sure that the NLMs loaded by NMSBASE.NCF
# do not conflict with your existing setup.
# Uncomment the following lines after review:
#         Statement 1

NMSBASE.NCF
LOAD SNMP verbose Control= Trap=
.
# $LANZ$ DO NOT DELETE THIS LINE
# NetWare LANalyzer Agent installation has created
# the following to load NetWare LANalyzer Agent.
# Uncomment the following 2 lines after review:
#         Statement 2

SEARCH ADD SYS:LANZ
LANZ.NCF
```

As shown in Figure 1-4, when NetWare LANalyzer Agent 1.0 or 1.0a was installed, the Installation utility added two sets of statements. In this figure, the statements are uncommented (as they should be to run the agent).

- ◆ Statement 1 adds the NMSBASE.NCF load statement, and also loads SNMP.

SNMP must be loaded with the *verbose*, *Control*, and *Trap* parameters as shown, so that ManageWise can retrieve information from the server.



There must be two spaces after the Control= parameter in order for ControlCommunity to accept any community name.

- ◆ Statement 2 adds the SYS:LANZ directory to the search path and adds a statement to load the LANZ.NCF file.

**3. If you need to uncomment or modify any of these statements in your current AUTOEXEC.NCF file, do so now.**

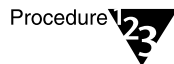
**4. When you have verified that the entries are correct, save the changes.**

**5. Exit the Installation utility.**

Press <Esc> until you are asked whether you want to exit the Installation utility. Select *Yes* to exit the utility.

## Reconciling the NCF Files

You must ensure that the AUTOEXEC.NCF and NMSBASE.NCF files are consistent. To do so, follow these steps:



**1. Log in to the server on which NetWare LANalyzer Agent is installed.**

- ◆ On a NetWare 3.12 server, log in as SUPERVISOR.
- ◆ On a NetWare 4.1x server, log in as a user with supervisor rights (usually as user ADMIN).

**2. Change directories to the SYS:\SYSTEM directory.**

**3. Print the AUTOEXEC.NCF and NMSBASE.NCF files.**

4. Compare the files and make the following changes, as necessary.
  - 4a. If there are duplicate entries with different values or parameters, reconcile them and set one value for both files.
  - 4b. Remove any duplicate statements from one of the files.
  - 4c. Confirm the order of the LOAD statements in the NMSBASE.NCF file to ensure consistency with the system configuration.
5. When you finish reconciling the NCF files, save your changes and log out of the server.

## Enabling the NetWare LANalyzer Agent Installation

For the changes you have made to take effect and to enable the NetWare LANalyzer Agent installation, you must bring down the server and then restart it.

### Bringing Down and Restarting a NetWare 4.1x Server

To bring down and restart a NetWare 4.1x server, follow these steps:

Procedure



1. At the NetWare system console prompt, enter the following command:

```
DOWN
```

The server is brought down safely; you return to the server prompt.

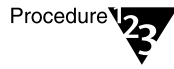
2. At the server prompt, enter this command:

```
RESTART SERVER
```

The NetWare 4.1x server starts up, and NetWare LANalyzer Agent is running.

## Bringing Down and Restarting a NetWare 3.12 Server

To bring down and restart a NetWare 3.12 server, follow these steps:



1. **At the NetWare system console prompt, enter the following command:**

**DOWN**

The server is brought down safely.

2. **To return to DOS, enter this command:**

**EXIT**

You return to the DOS prompt.

3. **At the DOS prompt, enter this command:**

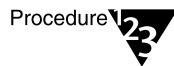
**SERVER**

The NetWare 3.12 server starts up, and NetWare LANalyzer Agent is running.

## Deinstalling NetWare LANalyzer Agent Software

Depending on your network configuration, you might have to deinstall NetWare LANalyzer Agent to make room for another agent or to upgrade to a more recent version of an agent.

To deinstall NetWare LANalyzer Agent, follow these steps:



1. **From the server console prompt, unload the currently installed version of the agent by entering the following command:**

**ULANZ**

2. **Enter the following command:**

**LOAD INSTALL**

The Installation Options menu is displayed. The menu that the Installation utility displays depends on whether you are on a NetWare 3.12 server or a NetWare 4.1 server.

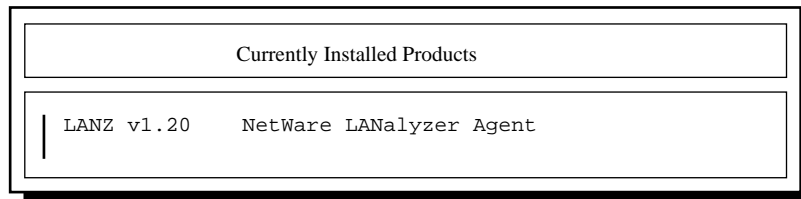
### 3. Select *Product Options*.

- ◆ On a NetWare 3.12 server, the Currently Installed Products list appears. If you already have other products installed, their names and version numbers are displayed.
- ◆ On a NetWare 4.1x server, the Other Installation Actions menu is displayed.

**On a NetWare 4.1x server, select *View/Configure/Remove installed products* from the Other Installation Actions menu.**

The Currently Installed Products list appears (see Figure 1-5).

Figure 1-5  
Currently Installed  
Products List



NetWare LANalyzer Agent is listed.

### 4. Use the <Down-arrow> key to select the **LANZ v1.20 NetWare LANalyzer Agent** product, then press <Delete>.

### 5. Select **Yes** to deinstall the agent.

If you select *No*, no action is taken and you return to the Currently Installed Products list.

### 6. Press <Esc> to exit.

## Results of Deinstalling NetWare LANalyzer Agent

When you deinstall NetWare LANalyzer Agent, the deinstallation program does the following:

- ◆ Removes all the files in the SYS:\LANZ directory and the directory itself.

- ◆ Removes the LANZ.NCF and ULANZ.NCF files from the SYS:\SYSTEM directory.
- ◆ Removes the NetWare LANalyzer Agent statements from the AUTOEXEC.NCF file. (See the information shown for Statement 2 in Figure 1-4 on page 13 for details.)
- ◆ Deletes the long-term trend data file from the GTREND directory.

“LANZ v1.20 NetWare LANalyzer Agent Deinstalled” is displayed in the Currently Installed Products List.

## 2 **Improving NetWare LANalyzer Agent Performance**

The measures described in this chapter can improve the performance of your NetWare® LANalyzer® Agent™ server.

You can configure the NetWare LANalyzer Agent functions described in this chapter by setting the parameters in the LANZ.NCF file.

The following topics are discussed in this chapter:

---

**Section and Page Number**

---

“Contents of the LANZ.NCF File” on page 20

“Modifying the LANZ.NCF File” on page 22

“Turning on the LANZ Control Screen” on page 23

“Disabling Packet Capture” on page 23

“Setting Packet Flow Control” on page 23

“Setting the Upper Limit of Available Memory” on page 24

“Purging Data from Server Memory” on page 24

“Sorting Concurrent Top Stations” on page 25

“Sending Alarms to ManageWise Consoles Automatically” on page 26

“Polling Source Route Bridges” on page 26

“Activating Changes in the LANZ.NCF File” on page 27

---



## Contents of the LANZ.NCF File

The LANZ.NCF file loads all the NetWare Loadable Module™ (NLM™) software required for NetWare LANalyzer Agent operation. The LANZ.NCF file resides in the SYS:SYSTEM directory.

Example 2-1 displays the complete text of the default LANZ.NCF file.

### Example 2-1 continued LANZ.NCF File

```
#
#                               NetWare LANalyzer Agent
#                               Version 1.2
#
#-----
# LANZ.NCF: NetWare LANalyzer Agent Load File
#
# This NCF file is created by the NetWare LANalyzer Agent install program.
# It is used to load the NetWare Loadable Module files that make up NetWare
# LANalyzer Agent.
#
# WARNING:   You should not modify this file unless you need to change
#            one of the configuration parameters documented below.
#            Other changes to this file are not recommended.  Should you
#            damage this file, you must reinstall NetWare LANalyzer Agent.
#
# NOTE:     To enable or disable the monitoring of network adapters
#            by NetWare LANalyzer Agent, use the LANZCON utility
#            as described in the NetWare LANalyzer Agent Installation
#            and Administration guide.
#
#-----
# Load Parameter Descriptions
#
# load LANZSU  debug=1
#
# debug=1    Turns on the LANZ Control screen to see the transactional
#            messages from the NetWare LANalyzer Agent.
#
# load LANZMEM bound=KB age=HHH
#
# bound=KB   This is the upper limit on memory that can be allocated
#            dynamically by the NetWare LANalyzer Agent.
#
#            Increasing this number allows you to create larger packet
#            capture buffers and maintain data for inactive stations
#            for a longer period of time.
#
#            Decreasing this value reduces the amount of memory that
#            can be used by NetWare LANalyzer Agent.  This leaves more
#            memory for the other server tasks.
#
#            NetWare LANalyzer Agent automatically purges data for
#            inactive stations as the memory boundary is approached.
#            This allows NetWare LANalyzer Agent to adjust to
```

**Example 2-1** *continued*  
**continued**  
**LANZ.NCF File**

```
#
#
# the memory that is available to it dynamically.
#
# If the boundary is low, purging occurs frequently, saving
# only data for stations that have been recently active on
# the network. If this happens, a message appears on the
# system console indicating that not enough memory has been
# allocated to NetWare LANalyzer Agent.
#
# KB is the memory boundary in kilobytes.
#
# Initial value: Set by the installation program
# based on memory usage
#
# Minimum recommended value: 512
#
# Maximum recommended value: 75% of free server memory
# when NLM files are loaded
#
# Default value: If bound=KB is not specified,
# it defaults to 2048.
#
# age=HHH NetWare LANalyzer Agent purges data for stations that have
# not been active on the network recently. This parameter
# controls how long data for inactive stations is maintained.
#
# Memory that is used by the station table is not available
# for other uses, such as capturing packets. Reducing the
# AGE value tends to increase the amount of memory
# available for capturing packets.
#
# If you cannot allocate capture buffers that are large,
# you may need to reduce the AGE value.
#
# HHH is the inactivity period, in hours, before station data
# is purged.
#
# Minimum recommended value: 1
#
# Default value: If age=HHH is not specified,
# it defaults to 168 (1 week)
#
# load LANZDI level=1
#
# level=1 It indicates that the LANZDI will stop receiving packets
# when CPU utilization gets high.
#
# Default is OFF. LANZDI will continue to receive packets even
# when CPU utilization gets high.
#
# load LANZSM topn=N
#
# topn=N The number of concurrent sorts of top N nodes that
```

### Example 2-1 *continued*

#### continued

#### LANZ.NCF File

```
#
#           NetWare LANalyzer Agent supports for each network adapter.
#
#           Recommended value: 4
#           Minimum value:     2
#           Maximum value:     10
#
# load LANZTR poll = 1
#
# poll=1     Polls token ring source-routed bridges.
#
# load LANZCTL trapreg=1
#
# trapreg=1  Causes SNMP traps to be sent to management consoles
#            advertising themselves on the network, as well as stations
#            listed in SYS:\ETC\TRAPTARG.CFG.  Omitting this parameter
#            or setting it to 0 causes traps to be sent only to those
#            stations listed in the SYS:\ETC\TRAPTARG.CFG file.
#
#-----
load gtrend.nlm \dvolname:\GTREND
load lanzsu.nlm
load lanzmem.nlm bound = 10160
load lanzlib.nlm
load lanzdi.nlm
load lanzael.nlm
load lanzhis.nlm
load lanzfcb.nlm
load lanzsm.nlm topn = 4
load lanztr.nlm
load lanzctl.nlm trapreg = 1
```

## Modifying the LANZ.NCF File

The sections below describe how to modify the parameters of the commands in the LANZ.NCF file to configure NetWare LANalyzer Agent functions.

To make changes in the LANZ.NCF file and modify the NetWare LANalyzer Agent configuration, use the following general procedure:

Procedure



1. **Open the LANZ.NCF file with a text editor.**
2. **Insert or modify the appropriate parameter as shown, and save the file.**
3. **Unload and reload NetWare LANalyzer Agent as described in “Activating Changes in the LANZ.NCF File” on page 27.**

## Turning on the LANZ Control Screen

The LANZ Control screen reports significant events for NetWare LANalyzer Agent.

To turn on the LANZ Control screen, insert the DEBUG parameter to the LOAD LANZSU.NLM statement as shown in the following statement:

```
LOAD LANZSU.NLM DEBUG=1
```

The default setting turns off the LANZ Control screen by omitting the DEBUG parameter.

## Disabling Packet Capture

You might want to disable the NetWare LANalyzer Agent packet capture function for security reasons to prevent others from observing sensitive data captured in the packets sent on the network segment.

To disable the NetWare LANalyzer Agent packet capture function, follow these steps:

**Insert a comment mark ( # ) as the first character in the following statement:**

```
LOAD LANZFCB.NLM
```

If you are interested in controlling packet capture during high levels of traffic rather than disabling packet capture entirely, see the next section, "Setting Packet Flow Control."

## Setting Packet Flow Control

NetWare LANalyzer Agent typically operates in promiscuous mode, receiving all packets on the network. However, if server utilization is high and performance becomes degraded, you can set the LEVEL parameter to 1, which configures the agent to yield when server traffic is high, and then automatically resume operation in promiscuous mode when the traffic level returns to normal.

The default is not to specify the LEVEL parameter at all, which allows continuous operation in promiscuous mode.

To set packet flow control, use the LEVEL parameter setting shown in the following statement:

```
LOAD LANZDI LEVEL=1
```

## Setting the Upper Limit of Available Memory

The BOUND parameter sets the upper limit of available memory that can be allocated dynamically to NetWare LANalyzer Agent.

The value of the BOUND parameter is measured in kilobytes. The default value is 2048 KB. The minimum recommended value is 512 KB. The maximum recommended value is 75 percent of the memory that is available after all NLM files are loaded.

You might receive the message, *Insufficient memory available for NetWare LANalyzer Agent*, in the following situations:

- ◆ The server has too little memory.
- ◆ The server has sufficient memory, but the memory is not available to NetWare LANalyzer Agent.
- ◆ You requested a packet capture buffer that is too large, and the agent grants you less memory than requested.

In each of these cases, Novell recommends that you increase the value of the BOUND parameter and add more RAM to your NetWare server.

To change the value of the BOUND parameter, edit the parameter with the appropriate value in the following statement in the LANZ.NCF file:

```
LOAD LANZMEM BOUND=2048 AGE=168
```

## Purging Data from Server Memory

NetWare LANalyzer Agent holds its data in server memory. You can control the amount of data held in memory by setting the value of the AGE parameter. When data reaches the “age” specified in the parameter, the data is purged from memory.

The value of the AGE parameter is measured in hours. The default value is 168, which is one week. The minimum recommended value is one hour.

Setting the AGE parameter prevents old conversation and node data from consuming excessive memory. This is of concern primarily on large, bridged networks.

Novell recommends that you lower the AGE parameter if you receive the message, *Insufficient memory available for NetWare LANalyzer Agent*, and you have allocated sufficient memory for the agent.

Having insufficient memory is not harmful to the agent or the server. NetWare LANalyzer Agent can run indefinitely even when it is not satisfied with the memory allocated to it.

To modify the amount of data held in server memory, change the value of the AGE parameter in the following LANZ.NCF file statement:

```
LOAD LANZMEM BOUND=2048 AGE=168
```

## Sorting Concurrent Top Stations

NetWare LANalyzer Agent sorts stations whenever the top eight graphs on the Network Dashboard™ window, the Stations window, or both are displayed by the ManageWise™ Console. The sorts are independent of each other and can be computed on the basis of different statistics.

Because each of the sort computations uses server CPU cycles, Novell recommends that you limit the number of concurrent computations NetWare LANalyzer Agent can support.

The TOPN parameter sets the number of concurrent sorts of topN nodes that NetWare LANalyzer Agent can support for each network adapter.

To set the number of concurrent sort computations per network adapter, set the TOPN parameter in the following statement:

```
LOAD LANZSM TOPN=n
```

The default value of the TOPN parameter is 4. The minimum value is 2. The maximum value is 10.

## Sending Alarms to ManageWise Consoles Automatically

NetWare LANalyzer Agent can automatically send SNMP alarms (sometimes referred to as *SNMP traps*) to ManageWise Consoles or other nodes on the network in the following configurations:

- ◆ NetWare LANalyzer Agent receives the service advertising protocol (SAP) packets sent by one or more ManageWise Consoles
- ◆ The ManageWise Console or other node is listed in the server's TRAPTARG.CFG file

The TRAPTARG.CFG file is stored in the SYS:\ETC directory. The file provides instructions in its use. You can edit the file with any ASCII text editor.

To enable alarms to be sent automatically, add the TRAPREG parameter setting as shown in this LANZ.NCF file statement (this is the default):

```
LOAD LANZCTL TRAPREG=1
```

If you omit the TRAPREG parameter or set its value to 0 (zero), the agent sends alarms only to ManageWise Consoles listed in the TRAPTARG.CFG file.

## Polling Source Route Bridges

To control source route bridge polling on token ring networks, use the POLL parameter as shown in the following statement:

```
LOAD LANZTR POLL=1
```

For the POLL parameter, 1 = On and 0 = Off.

Setting the POLL parameter to 1 polls source routed bridges once every second. (You cannot change the polling rate.) The default is On.

To turn off this function, set the POLL parameter to 0:

```
LOAD LANZTR POLL=0
```

The default is to omit the POLL parameter. Also, the LOAD LANZTR statement is commented out on systems that do not have a token ring adapter installed.

## **Activating Changes in the LANZ.NCF File**

To activate the changes you make in the LANZ.NCF file, save the file and then unload and reload NetWare LANalyzer Agent by issuing the following commands at the server prompt:

**ULANZ**

The ULANZ command unloads NetWare LANalyzer Agent.

**LANZ**

The LANZ command reloads the agent.





## ***Using the NetWare LANalyzer Agent Console Utility***

The NetWare® LANalyzer® Agent™ 1.2 product provides a Console utility (LANZCON.NLM) that performs three main tasks:

- ◆ Enables or disables network monitoring by the selected network adapters
- ◆ Provides a source of detailed troubleshooting information
- ◆ Resolves a residual entry (for example, a Host TopN entry created by an ManageWise™ Console that was terminated unexpectedly)

When you install NetWare LANalyzer Agent, LANZCON.NLM is installed automatically in the SYS:LANZ directory.

The following topics are discussed in this chapter:

---

**Topic and Page Number**

---

“Loading the NetWare LANalyzer Agent Console Utility” on page 30

“Enabling or Disabling Network Adapter Monitoring” on page 31

“Viewing Network Adapter Information” on page 32

“Viewing the Agent Items Status” on page 34

“Accessing Detailed Information About Each Item” on page 37

---

## Loading the NetWare LANalyzer Agent Console Utility

To use LANZCON.NLM, enter the following command at the NetWare console prompt:

```
LOAD LANZCON
```

LANZCON.NLM is loaded, and it displays the Network Adapters screen (see Figure 3-1). The Network Adapters screen displays summary information about the network adapters that are currently installed on the server.

Figure 3-1  
Network Adapters Screen

#	Description	Media Type	Adapter Address
1	Novell NE2000	Ethernet	00-00-1B-1E-70-2E
2	IBM Streamer Family ODI NetWare	Token Ring	10-00-4A-00-07-CA
3	Madge Smart 16/4 MC Ring Node	Token Ring	00-00-F5-0F-8B-DD

F3=Toggle Monitoring    Enter=Select View    Esc=Exit

The information displayed for each network adapter includes the following:

**Number ( # ).** The network adapter entry number in the network interface table.

**Description.** A brief description of the network adapter.

**Media Type.** The type of network connected to the network adapter—token ring or Ethernet.

**Adapter Address.** The physical address of the network adapter.

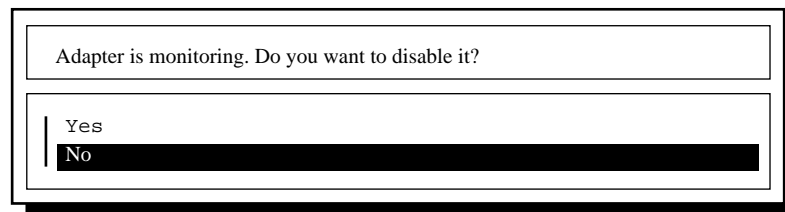
## Enabling or Disabling Network Adapter Monitoring

You can enable or disable monitoring of a selected network adapter.

To enable or disable monitoring, follow these steps:

1. **From the Network Adapters screen, use the arrow keys to highlight the appropriate adapter, then press <F3>.**
  - ◆ If the selected adapter is currently monitoring an Ethernet or token ring network, the console displays the screen shown in Figure 3-2.

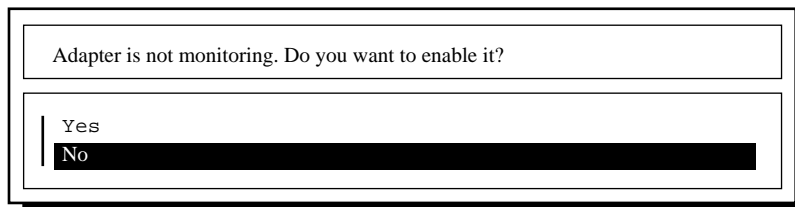
Figure 3-2  
Adapter Is Monitoring Screen



```
Adapter is monitoring. Do you want to disable it?
|
| Yes
| No
```

- ◆ If the selected adapter is not monitoring an Ethernet or token ring network, the console displays the screen shown in Figure 3-3.

Figure 3-3  
Adapter Not Monitoring Screen



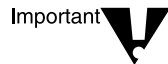
```
Adapter is not monitoring. Do you want to enable it?
|
| Yes
| No
```

2. **Select *Yes* or *No*, as appropriate, to enable or disable monitoring by the network adapter.**

If you disable monitoring, all LAN analysis data for the selected adapter is deleted.

## Viewing Network Adapter Information

You can view more detailed information about the items being monitored by each network adapter listed.



In the SMP environment on the NetWare 4.11 platform, LANZ agent cannot monitor more than one adapter.

To bring up detailed information for network adapter items, follow these steps:

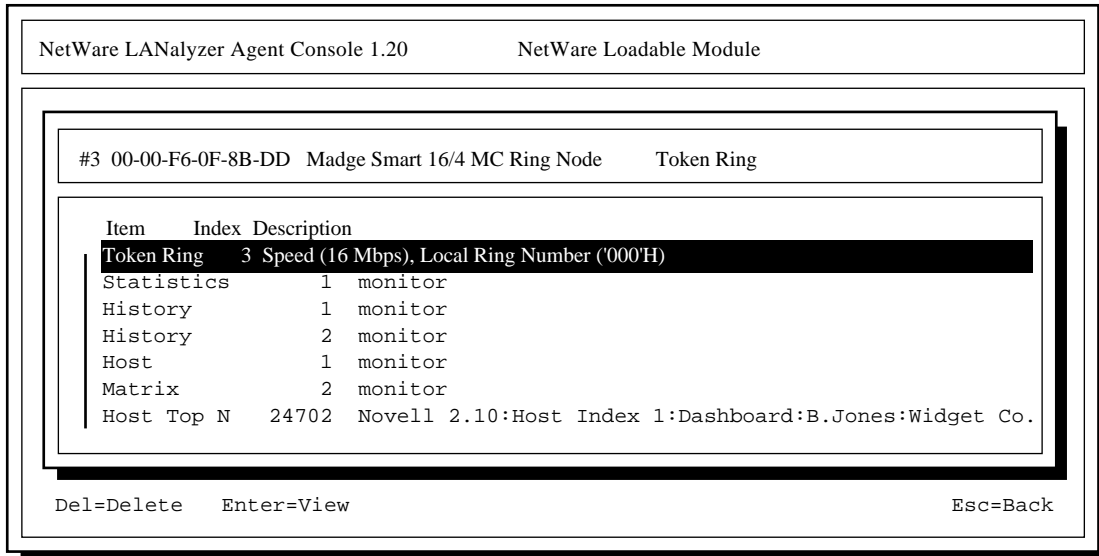
1. **From the Network Adapters screen, use the arrow keys to highlight the adapter of interest, then press <Enter>.**

The LANZCON utility displays the Select Information to View menu.

2. **Select *Show Adapter Items*.**

The LANZCON utility displays the Network Adapter Items screen. The Network Adapter Items screen displays all the items related to the selected network adapter. Figure 3-4 shows an example for a token ring adapter.

**Figure 3-4**  
**Network Adapter Items Screen**



As shown in Figure 3-4, the screen for a token ring adapter includes the information from the Novell Token Ring RMON MIB. For more information, see “Viewing the Agent Items Status” on page 34.

To return to the Select Information to View menu, press <Esc>.

The following information is provided for the selected adapter:

**Item.** The types of items that are currently being monitored by the selected adapter. Figure 3-4 shows a set of typical items consisting of *Token Ring*, *Statistics*, *History*, *Host*, *Matrix*, and *Host TopN*. NetWare LANalyzer Agent monitors these items by default. In Figure 3-4, the *Host Top N* item, indicating the list of the busiest nodes, has been added by a user. You can add other items to this display from the ManageWise Console, depending on your configuration.

You can select any of these items for more information about each topic.

To view the values for the selected item, highlight the desired item, then press <Enter>. See the following sections for more examples of the screens.

**Index.** The entry number of the displayed item in the list of all the items of the same type. The related tables are identified by this index.

**Description.** A textual description of the entry. This column indicates the software entity or user that created the item. The items automatically monitored by NetWare LANalyzer Agent are indicated by *monitor*.

For a token ring network entry, this column shows the media speed and the local ring number.

## Viewing the Agent Items Status

When you select *Show Agent Items* from the Select Information to View menu, LANZCON displays all the items for each network adapter being monitored by NetWare LANalyzer Agent.

To view the agent items status for the selected agent, following these steps:

Procedure



1. **From the Network Adapters screen, press <Enter>.**

LANZCON displays the Select Information to View menu.

2. **Select *Show Agent Items*.**

The LANZCON utility displays the following screen (see Figure 3-5).

**Figure 3-5**  
**All NetWare LANalyzer Agent Items Screen**

NetWare LANalyzer Agent Console 1.20		NetWare Loadable Module	
All NetWare LANalyzer Agent Items			
Item	Index	Description	
Statistics	1	monitor	
Statistics	2	monitor	
History	1	monitor	
History	2	monitor	
History	3	monitor	
History	4	monitor	
Host	1	monitor	
Host	2	monitor	
Matrix	1	monitor	
Matrix	2	monitor	
Host TopN	8466	Novell 2.10:EtherStat 1:Dashboard:Pam Gill:WidgetCo	
Del=Delete		Enter=View	
		Esc=Back	

The All NetWare LANalyzer Agent Items screen shows all the items related to the agent monitoring the segment. Thus, if you are using multiple adapters to monitor multiple network segments, the screen lists all the items being monitored by the agent.

**Deleting Entries.** You can delete any entry (except the token ring network entry) by selecting the entry, pressing <Delete>, then selecting *Yes* to confirm.

To return to the Network Adapter Items screen, press <Esc>.

The following information is provided for the agent:

**Item.** The types of items available. Figure 3-5 shows a set of typical items consisting of *Statistics*, *History*, *Host*, *Matrix*, and *Host Top N*. Additional items can be displayed, depending on your configuration.



You can select any of these items for more information about each topic.

To view the values for an item, select the desired item and press <Enter>. See the following sections for more examples of the screens.

**Index.** The entry number of the displayed item in the list of all the items of the same type. The related tables are identified by this index.

**Description.** A textual description of the entry. This column indicates the software entity or user that created the item table. The items automatically monitored by NetWare LANalyzer Agent are indicated by *monitor*.

For a token ring network entry, this column shows the media speed and the local ring number.

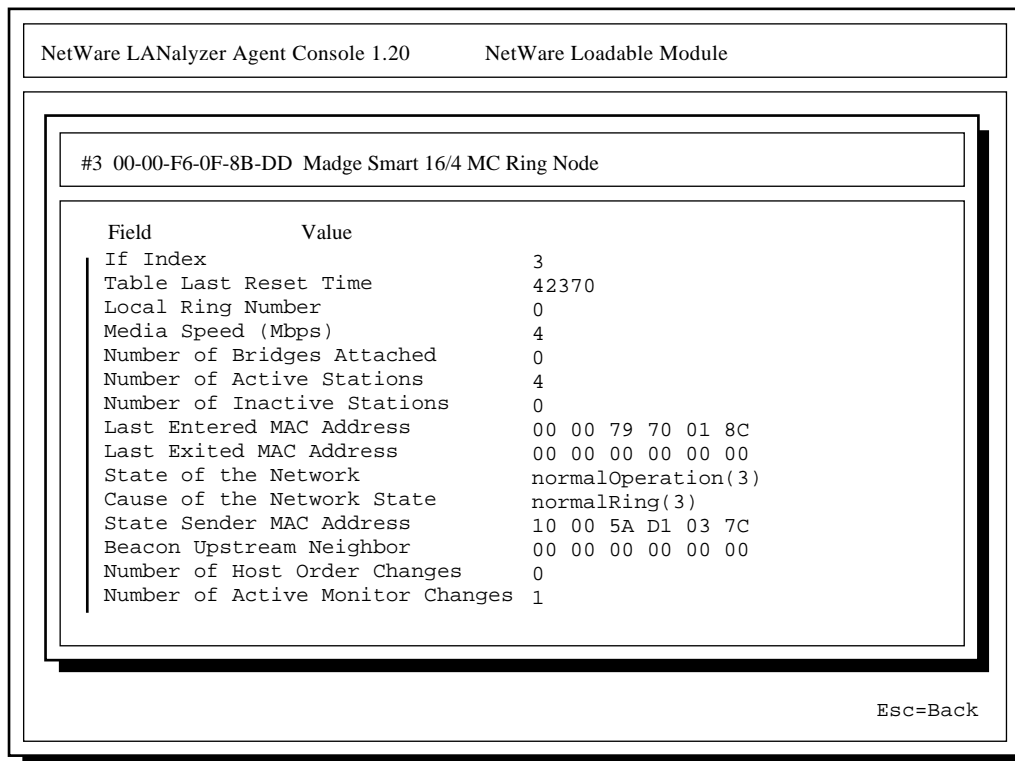
## Accessing Detailed Information About Each Item

This section describes the major categories of information available for both the selected network adapter and NetWare LANalyzer Agent.

### Viewing the Token Ring RMON MIB Information

To view the token ring RMON MIB information, highlight the *Token Ring* item on the Network Adapter Items screen, then press <Enter>. The screen shown in Figure 3-6 is displayed:

Figure 3-6  
Token Ring RMON MIB Table Screen



NetWare LANalyzer Agent Console 1.20      NetWare Loadable Module

#3 00-00-F6-0F-8B-DD Madge Smart 16/4 MC Ring Node

Field	Value
If Index	3
Table Last Reset Time	42370
Local Ring Number	0
Media Speed (Mbps)	4
Number of Bridges Attached	0
Number of Active Stations	4
Number of Inactive Stations	0
Last Entered MAC Address	00 00 79 70 01 8C
Last Exited MAC Address	00 00 00 00 00 00
State of the Network	normalOperation(3)
Cause of the Network State	normalRing(3)
State Sender MAC Address	10 00 5A D1 03 7C
Beacon Upstream Neighbor	00 00 00 00 00 00
Number of Host Order Changes	0
Number of Active Monitor Changes	1

Esc=Back

Press <Esc> to exit this screen.

## Viewing Statistics Information

The statistics information presents the basic statistics for each monitored adapter per segment.

To view the statistics information, highlight *Statistics* in the Network Adapter Items screen (see Figure 3-4 on page 33) or the NetWare LANalyzer Agent Items screen (see Figure 3-5 on page 35), then press <Enter>.

For an Ethernet network entry, the LANZCON utility displays the Statistics Information screen shown in Figure 3-7.

**Figure 3-7**  
**Statistics Information Screen**

The screenshot shows a terminal window titled "NetWare LANalyzer Agent Console 1.20" and "NetWare Loadable Module". The main content area displays the following statistics for adapter #1 (00-00-1B-19-7C-78) on a Novell NE2000:

Field	Value
Index	1
Data Source	1.3.6.1.2.1.2.2.1.1.1
Drop Events	99
Octets	3179300154
Packets	70204017
Broadcast Packets	4967032
Multicast Packets	481504
CRC Align Errors	2670
Undersize Packets	0
Oversize Packets	0
Fragments	7546
Jabbers	7
Collisions	7546
Packets 64 Octets	15208253
Packets 65 to 127 Octets	40513365
Packets 128 to 225 Octets	6856442
Packets 256 to 511 Octets	4313743
Packets 512 to 1023 Octets	1715846
Packets 1024 to 1518 Octets	1484069
Owner	monitor
Status	valid(1)

At the bottom of the screen, the text "F1=Help" is on the left and "Esc=Back" is on the right.

This screen displays the statistical values of the selected network adapter. The display is updated periodically with the latest values for each field.

To exit this screen, press <Esc>.

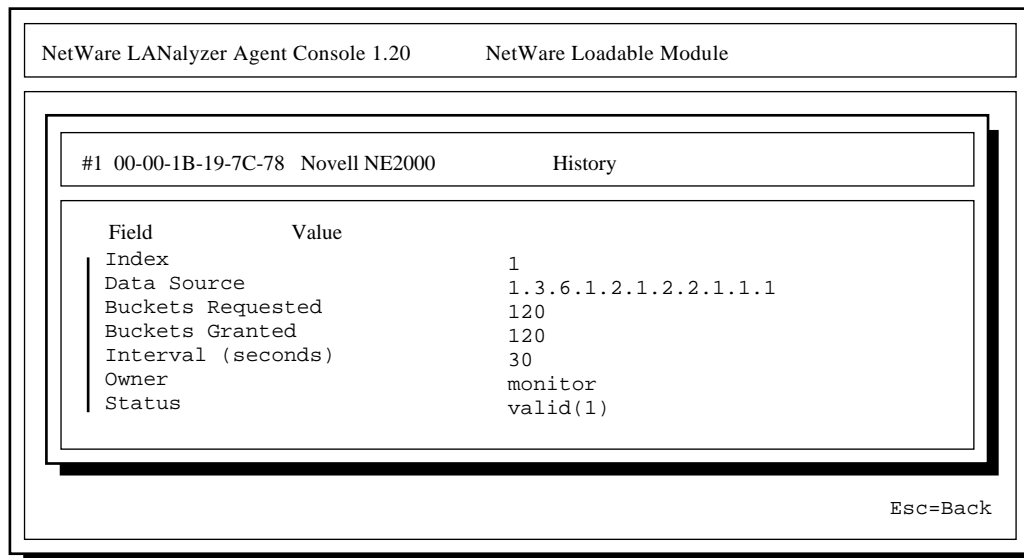
## Viewing History Information

The history information defines sampling functions for the networks that are being monitored. The History Control table defines a set of samples at a particular sampling interval for a particular network adapter.

To view the history information, highlight *History* in the Network Adapter Items screen (see Figure 3-4 on page 33), or the All NetWare LANalyzer Agent Items screen (see Figure 3-5 on page 35), then press <Enter>.

The LANZCON utility displays the History Information screen.

**Figure 3-8**  
**History Information Screen**



NetWare LANalyzer Agent Console 1.20      NetWare Loadable Module

#1 00-00-1B-19-7C-78 Novell NE2000      History

Field	Value
Index	1
Data Source	1.3.6.1.2.1.2.2.1.1.1
Buckets Requested	120
Buckets Granted	120
Interval (seconds)	30
Owner	monitor
Status	valid(1)

Esc=Back

To exit this screen, press <Esc>.

The field descriptions are as follows:

**Index.** An integer that uniquely identifies a row in the History Control table.

**Data Source.** Identifies the network adapter and, therefore, the Ethernet or token ring segment that is the source of the data for entries defined by this object.

**Buckets Requested.** The requested number of discrete sampling intervals over which data is to be saved in the portion of the media-specific table associated with this entry.

**Buckets Granted.** The actual number of discrete sampling intervals over which data is to be saved.

**Interval.** The interval, in seconds, over which data is sampled for each bucket. The interval can be set to any number between 1 and 3,600 (one hour). The default interval for past hour is 30 seconds per sample, and the default interval for past day is 30 minutes (or 1,800 seconds) per sample.

The sampling scheme is determined by the buckets granted and the control interval.

**Owner.** The entity that created the item. *Monitor* indicates that the item was created by NetWare LANalyzer Agent.

**Status.** A status of *valid* indicates that the agent is operating normally under the instructions given by the table.

## Viewing Host Information

The host group gathers statistics about specific hosts—or *nodes*—on the LAN. NetWare LANalyzer Agent learns of new nodes on the LAN by observing the source and destination media access control (MAC) addresses in good packets. For each node known to the agent, a set of statistics is maintained.

To view the host (node) information, highlight *Host* in the Network Adapter Items screen (see Figure 3-4 on page 33), or the NetWare LANalyzer Agent Items screen (see Figure 3-5 on page 35), then press <Enter>.

The LANZCON utility displays the Host Information screen shown in Figure 3-9.

**Figure 3-9**  
**Host Information Screen**

Field	Value
Index	1
Data Source	1.3.6.1.2.1.2.2.1.1.1
Table Size	392
Last Delete Time	0
Owner	monitor
Status	valid(1)

The host group consists of three tables: two data tables and one control table. The two data tables are hostTable and hostTimeTable. The control table, hostControlTable, includes the following objects, which correspond to the fields displayed in the Host Information screen:

**Index.** An integer that uniquely identifies a row in the hostControl Table. Each row in the control table refers to a unique network adapter and, thus, a unique segment.

**Data Source.** Identifies the network adapter, and therefore, the Ethernet or token ring segment that is the source of the data for entries defined by this object.

**Table Size.** The number of rows in the hostTable associated with this row.

**Last Delete Time.** The value of the sysUpTime MIB object that corresponds to the last time an entry was deleted from the portion of the hostTable associated with this row. The value is 0 if no deletions occurred.

**Owner.** Indicates the entity or user that created the item. *Monitor* indicates that the item was created by NetWare LANalyzer Agent.

**Status.** A status of *valid* indicates that the agent is operating normally under the instructions given by the table.

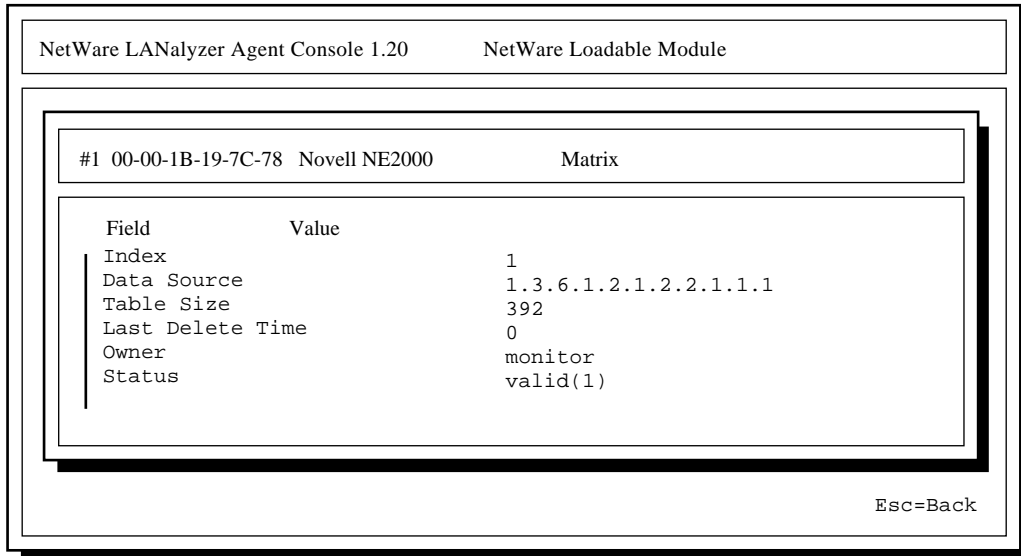
## Viewing Matrix Information

The matrix group records information about the conversations between pairs of nodes on a network segment. The information is stored in the form of a matrix. This method of organization is useful for retrieving specific pairings of traffic information, such as finding out which nodes are making the most use of a server.

To view the matrix information, highlight *Matrix* in the Network Adapter Items screen (see Figure 3-4 on page 33), or the All NetWare LANalyzer Agent Items screen (see Figure 3-5 on page 35), then press <Enter>.

The LANZCON utility displays the Matrix Information screen shown in Figure 3-10.

**Figure 3-10**  
**Matrix Information Screen**



The matrix group consists of three tables: two data tables and one control table. The data tables are matrixSDTable and matrixDSTable. The control table, matrixControlTable, includes the following objects, which correspond to the fields displayed in the Matrix Information screen:

**Index.** An integer that uniquely identifies a row in the matrixControl Table. Each row in the control table defines a function that discovers conversations on a particular network and places statistics about them in the two data tables.

**Data Source.** Identifies the network adapter and, therefore, the Ethernet or token ring segment that is the source of the data for entries defined by this object.

**Table Size.** The number of rows in the matrixTable associated with this row.



**Last Delete Time.** The value of the sysUpTime object that corresponds to the last time an entry was deleted from the portion of the matrixTable associated with this row. The value is 0 if no deletions occurred.

**Owner.** Indicates the entity or user that created the item. *Monitor* indicates that the item was created by NetWare LANalyzer Agent.

**Status.** A status of *valid* indicates that the agent is operating normally under the instructions given by the table.

## *appendix* **A** ***Troubleshooting Information***

This chapter presents the following information:

- ◆ Suggestions and information for troubleshooting the installation
- ◆ Messages NetWare® LANalyzer® Agent™ software displays in response to problems encountered when monitoring adapters

### **Troubleshooting the Installation**

You might encounter a few known problems during or shortly after you install NetWare LANalyzer Agent. This section presents tips for handling these problems. Novell recommends that you also consult the SYS:\LANZ\INSTALL.LOG file for information about the installation.

#### **Problem 1. Your server abended when you backed it up after installing NetWare LANalyzer Agent.**

**Explanation** This problem is not related to the installation process. However, some NetWare LANalyzer Agent files were loaded and probably were open when you backed up the server. Depending on the backup software you use, backing up the LANZ.CFG file when it is open can cause the server to abend.

**Action** Do not back up the LANZ.CFG file when you back up the server.

#### **Problem 2. You loaded NetWare LANalyzer Agent on a server, but you cannot monitor the segments to which the server is attached.**

**Explanation** When you installed NetWare LANalyzer Agent, you did not use the <F5> key to select the promiscuous mode driver for each of the network adapters you want to monitor.

**Action** Reinstall NetWare LANalyzer Agent. Be sure to press <F5> only once for each adapter. When you press <F5> twice, the adapter is selected and then deselected. Use LANZCON to enable monitoring of the

appropriate adapter (see “Enabling or Disabling Network Adapter Monitoring” on page 31).

**Problem 3. After NetWare LANalyzer Agent is installed, the SMART386.LAN driver cannot be loaded.**

**Explanation** When you install NetWare LANalyzer Agent, the SMART386.LAN driver is updated with a driver named MADGEODI.LAN. Because the driver name was changed, you need to update the files that load drivers.

**Action** Modify the files that load the adapter drivers to load the MADGEODI.LAN driver.

**Problem 4. After NetWare LANalyzer Agent is installed, the NE3200.LAN driver cannot be loaded.**

**Explanation** When you install NetWare LANalyzer Agent, the NE3200.LAN driver is updated with a driver named NE3200P.LAN. Because the driver name was changed, you need to update the files that load drivers.

**Action** Modify the files that load the adapter drivers to load the NE3200P.LAN driver.

**Problem 5. After NetWare LANalyzer Agent is installed, the NE2-32.LAN driver cannot be loaded.**

**Explanation** When you install NetWare LANalyzer Agent, the NE2-32.LAN driver is updated with a driver named NE2\_32.LAN. Because the driver name was changed, you need to update the files that load drivers.

**Action** Modify the files that load the adapter drivers to call the NE2-32.LAN driver, and then load the NE2\_32.LAN driver.

**Problem 6. The Installation program displays this message: “Can’t load PINSTALL.”**

**Explanation** Several situations can prevent PINSTALL from loading. For example, PINSTALL cannot be loaded remotely from a workstation disk drive to a remote server.

**Action** Press <Alt+Esc> to return to the server’s system console screen. Check the error messages reported by the loader utility for more specific information about why PINSTALL did not load. If you are attempting to install the agent from a workstation, copy the NetWare LANalyzer

Agent files to a volume on the server directory as described in “Installing from Your Workstation to Remote Servers” on page 5.

## Adapter Monitoring Messages

This section lists the messages that NetWare LANalyzer Agent displays when it cannot monitor an adapter. An explanation and a recommended action is provided for each message.

### **LANalyzer — Ethernet adapter [MAC address] is not monitored because it is a pipelined adapter.**

- Explanation    *A pipelined adapter* is one that begins to send received data to the driver before the entire packet has been received. NetWare LANalyzer Agent cannot support this method of data reception because it must tally all the information in a packet before the information is sent to its destination.
- Action        If the adapter allows you to switch from pipelined mode to nonpipelined mode, do so. If the adapter cannot switch modes, use a nonpipelined adapter for NetWare LANalyzer Agent transactions. Check the NetWire® bulletin board for information regarding availability of the recommended adapters. You might have to contact your adapter vendor for the appropriate adapter.

**LANalyzer — Ethernet adapter [MAC address] is not monitored because the driver does not support promiscuous mode.**

Explanation    *A promiscuous mode driver* receives all the packets and errors on the network it is attached to. NetWare LANalyzer Agent requires promiscuous mode to function properly, so the agent does not support nonpromiscuous mode Ethernet or token ring adapters.

Action        Install a promiscuous mode driver on the server. Check the NetWire bulletin board for information regarding availability of the latest promiscuous mode drivers. You might have to contact your adapter vendor for the appropriate driver.

**LANalyzer — Token Ring adapter [MAC address] is not monitored because it is a pipelined adapter.**

Explanation    *A pipelined adapter* is one that begins to send received data to the driver before the entire packet has been received. NetWare LANalyzer Agent cannot support this method of data reception because it must tally all the information in a packet before the information is sent to its destination.

Action        If the adapter allows you to switch from pipelined mode to nonpipelined mode, do so. If the adapter cannot switch modes, use a nonpipelined adapter for NetWare LANalyzer Agent transactions. Check the NetWire bulletin board for information regarding availability of the recommended adapters. You might have to contact your adapter vendor for the appropriate adapter.

**LANalyzer — Token Ring adapter [MAC address] is not monitored because the driver does not support promiscuous mode.**

Explanation    *A promiscuous mode driver* receives all the packets and errors on the network it is attached to. NetWare LANalyzer Agent requires promiscuous mode to function properly, so the agent does not support nonpromiscuous mode Ethernet or token ring adapters.

Action        Install a promiscuous mode driver on the server. Check the NetWire bulletin board for information regarding availability of the latest promiscuous mode drivers. You might have to contact your adapter vendor for the appropriate driver.

**LANalyzer — Token Ring adapter [MAC address] is not monitored because the driver does not support raw send.**

- Explanation NetWare LANalyzer Agent requires an adapter driver that supports the *raw send* feature. An adapter driver that supports raw send allows applications to build both the header and data components of a frame. The driver then receives the packet and sends it to its destination.
- Action Install an adapter driver on the server that supports raw send. Check the NetWire bulletin board for information regarding availability of the recommended drivers. You might have to contact your adapter vendor for the appropriate driver.

**LANalyzer — Adapter [MAC address] is not monitored because it is not a supported media type.**

- Explanation NetWare LANalyzer Agent supports only Ethernet or token ring, although 100BaseT and 100VG-AnyLAN are considered Ethernet media types. Any other adapter media types are not supported.
- Action Use an Ethernet or token ring adapter for NetWare LANalyzer Agent operations.

**LANalyzer — Adapter [MAC address] is not monitored because NetWare LANalyzer Agent cannot allocate memory.**

- Explanation NetWare LANalyzer Agent does not have adequate RAM available to it to build the internal data structures required to monitor the adapter.
- Action Do one or both of the following: 1) Unload any unnecessary NLM™ files. 2) Add additional memory to your server.

**LANalyzer — Adapter [MAC address] is not monitored because the driver's promiscuous mode cannot be turned on.**

- Explanation The driver is corrupted or the adapter is damaged.
- Action Replace the adapter. If the problem persists, call your Novell Authorized Reseller<sup>SM</sup> group.



# Index

100BaseT 49  
100VG-AnyLAN 49

## A

Active Network Interfaces screen 30  
adapter  
    address 30  
    information, viewing 32  
    media type 30  
    pipelined 47  
    selecting to monitor 8, 11, 32  
AGE parameter 24  
agent information 34  
alarms  
    sending to NMS Consoles automatically 26  
    TRAPREG parameter 26  
    TRAPTARG.CFG file 26  
AUTOEXEC.NCF file 14  
    enabling 15  
    not modified by agent installation 12

## B

backup directory 5  
BOUND parameter 24  
buckets granted 40  
buckets requested 40

## C

community name 14

Control parameter in LOAD SNMP statement 14

## D

data source 40  
    host information 41  
DEBUG parameter 23  
deinstalling NetWare LANalyzer Agent 16  
deleting entries in a LANZCON table 35  
direct connection 5  
DOWN command 15  
drivers  
    MADGEOD.LAN 46  
    NE2\_32.LAN 46  
    NE2-32.LAN 46  
    NE3200 46  
    NE3200P 46  
    promiscuous mode 4  
    SMART386.LAN 46

## E

Ethernet  
    disk space required for trend data 4, 11  
    pipelined adapter 47  
    promiscuous mode driver 48  
    subnetwork identified 40  
EXIT command 16

## H

History Information screen 39



- buckets granted 40
  - buckets requested 40
  - data source 40
  - interval 40
- Host Information screen
  - data source 41
  - index 41
  - last delete time 42
  - owner 42
  - status 42
  - table size 41

**I**

- index
  - host control table 41
  - matrix control table 43
- installation
  - adapters to monitor, selecting 11
  - from the server console 9
  - from workstation 5
  - INSTALL.LOG file 5
  - MADGEODI.LAN driver 46
  - ManageWise and 3
  - NCF files, reconciling differences in 14
  - NE2\_32.LAN driver 46
  - NE2-32.LAN driver 46
  - NE3200.LAN driver 46
  - NE3200P.LAN driver 46
  - NetWire bulletin board and 2
  - PINSTALL does not load 46
  - promiscuous mode drivers, list of 11
  - RCONSOLE utility and 5
  - remote console session 5
  - REMOTE.NLM 5
  - requirements 3
  - RSPX.NLM 5
  - SMART386.LAN driver 46
  - Symmetric Multiprocessing (SMP) server and 8
  - tasks to complete before installation 2
  - trend data, storing 11
  - troubleshooting 45
  - two main processes in 4

- unloading the previous version of the agent 6
  - XCOPY command parameters 6
- interval of data sampling 40

## L

- LANZ command 27
- LANZ Control screen 23
- LANZ.CFG file
  - do not back up 45
- LANZ.NCF file
  - activating changes in 27
  - AGE parameter 24
  - BOUND parameter 24
  - contents of 20
  - DEBUG parameter 23
  - LANZ Control screen 23
  - LANZSU.NLM 23
  - memory
    - purging data from server memory 24
  - packet capture, disabling 23
  - packet flow control 23
  - top stations, sorting 25
  - TRAPREG parameter 26
- LANZCON.NLM 29
- LANZDI.NLM 24
- LANZFCB.NLM 23
- LANZMEM.NLM 25
- LANZSM.NLM 25
- LANZSU.NLM 23
- LANZTR.NLM 26
- LEVEL parameter 23

## M

- MADGEODI.LAN driver 46
- ManageWise
  - installation of 3
- Matrix Information screen 42
  - data source 43
  - index 43
  - last delete time 44

- owner 44
- status 44
- table size 43
- media type of adapter 30
  - 100BaseT as Ethernet 49
  - 100VG-AnyLAN as Ethernet 49
- memory
  - AGE parameter 24
  - cannot allocate 49
  - insufficient for NetWare LANalyzer Agent 24
  - LANZMEM.NLM 25
  - purging data from 24
  - requirements 3
  - setting upper limit for agent 24

## N

- NCF files, reconciling differences in 14
- NE2\_32.LAN driver 46
- NE2-32.LAN driver 46
- NE3200.LAN driver 46
- NE3200P.LAN driver 46
- NetWare LANalyzer Agent
  - agent items status 34
  - backup directory 5
  - cannot allocate memory 49
  - deinstalling 16
  - disk space required 3
  - history information 39
  - host information 40
  - installation
    - requirements 3
    - two main processes in 4
  - matrix information 42
  - memory
    - insufficient 24
    - purging data from 24
    - setting upper limit 24
  - memory requirements 3
  - NCF files, reconciling differences in 14
  - packet flow control 23
  - pipelined adapter 47
  - promiscuous mode drivers and 4

- raw send 49
- SMP server and 8
- SNMP alarms 26
- statistics information 38
- top stations, sorting 25
- unloading 6
- NetWare LANalyzer Agent Console utility 29
  - Active Network Interfaces screen 30
  - adapter information 32
  - agent information 34
  - deleting entries in a LANZCON table 35
  - History Information screen 39
  - Matrix Information screen 42
  - segment monitoring, enabling or disabling 31
  - SMP server and 8
- NetWire bulletin board 2
- Network Adapter Items screen
  - token ring RMON MIB information 32
- NMS Console 3
- NMSBASE.NCF file 14

## P

- packet capture
  - buffer too large 24
  - disabling 23
- packet flow control 23
- PINSTALL loading problem 46
- pipelined adapter 47, 48
- POLL parameter 26
- polling source route bridges 26
- promiscuous mode driver 4
  - cannot turn on 49
  - list of during installation 11
  - requirement for 48

## R

- RAM requirements 3
- raw send 49
- RCONSOLE utility 5
- remote console session 5

REMOTE.NLM 5  
RESTART SERVER command 15  
RSPX.NLM 5

## S

segment monitoring, enabling or disabling 31  
SMART386.LAN driver 46  
SMP server 8, 32  
SNMP  
    accepting any community name 14  
    alarms 26  
    Control parameter and 14  
    management station 3  
    traps 26  
source route bridges  
    polling 26  
statistics information 38  
Statistics Information screen 39  
Symmetric Multiprocessing (SMP) server 8  
    changing monitored adapter 8

## T

token ring  
    disk space required for trend data 4, 11  
    local ring number 34  
    media speed 34  
    pipelined adapter 48  
    promiscuous mode driver 48  
    raw send feature 49  
    RMON MIB information 32  
    RMON MIB table 37  
    source route bridges, polling 26  
top stations, sorting 25  
TOPN parameter 25  
TRAPREG parameter 26  
TRAPTARG.CFG file 26  
trend data  
    free disk space required 11  
    server disk space required for 4  
    storing 11

## U

ULANZ command 6, 16, 27  
unloading NetWare LANalyzer Agent 6

## X

XCOPY command parameters 6