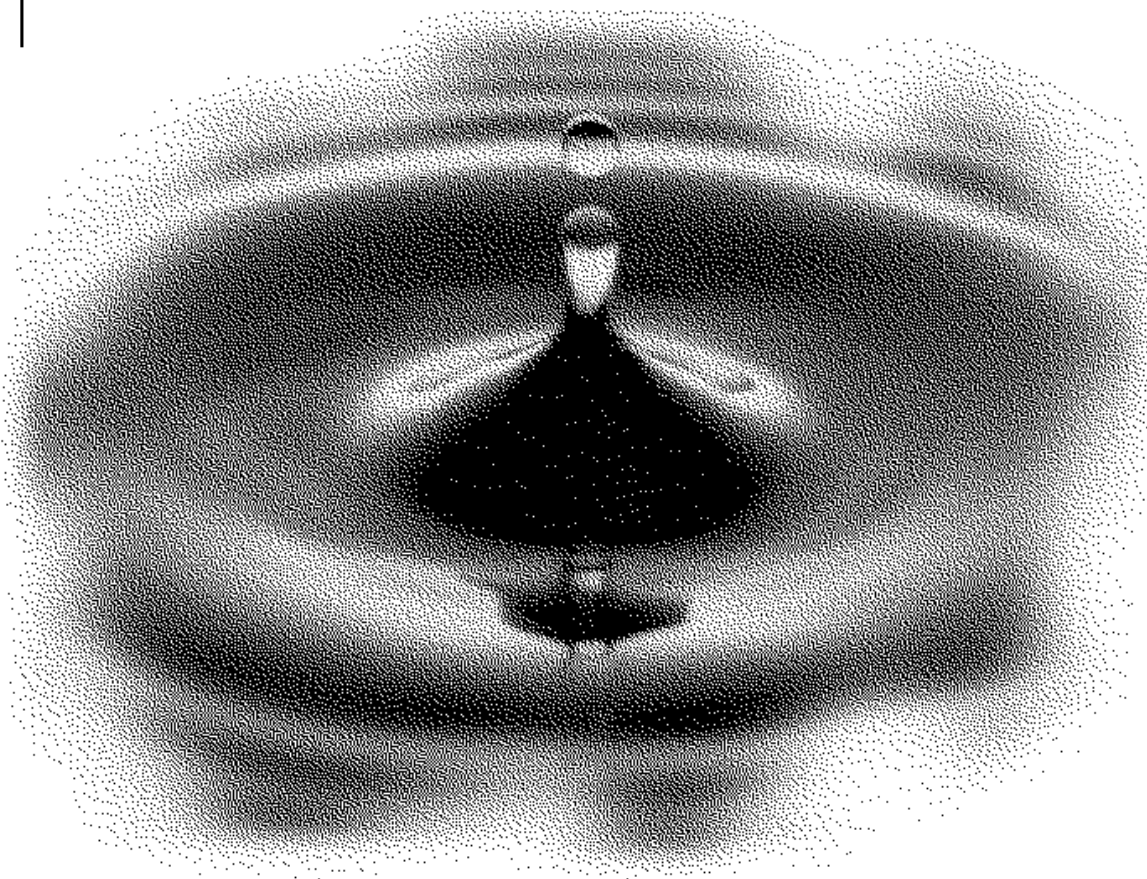


**Version 1.3**

**Getting Started**



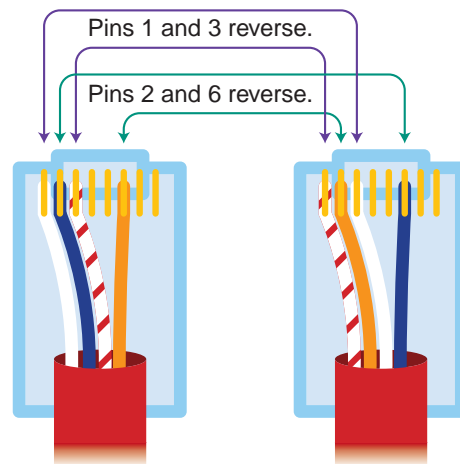
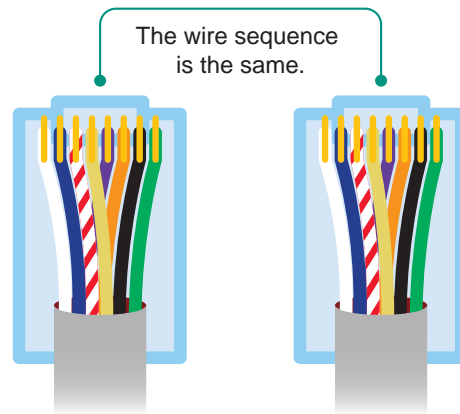
**Internet Caching System**

**Novell®**

# 1. SETTING UP THE HARDWARE

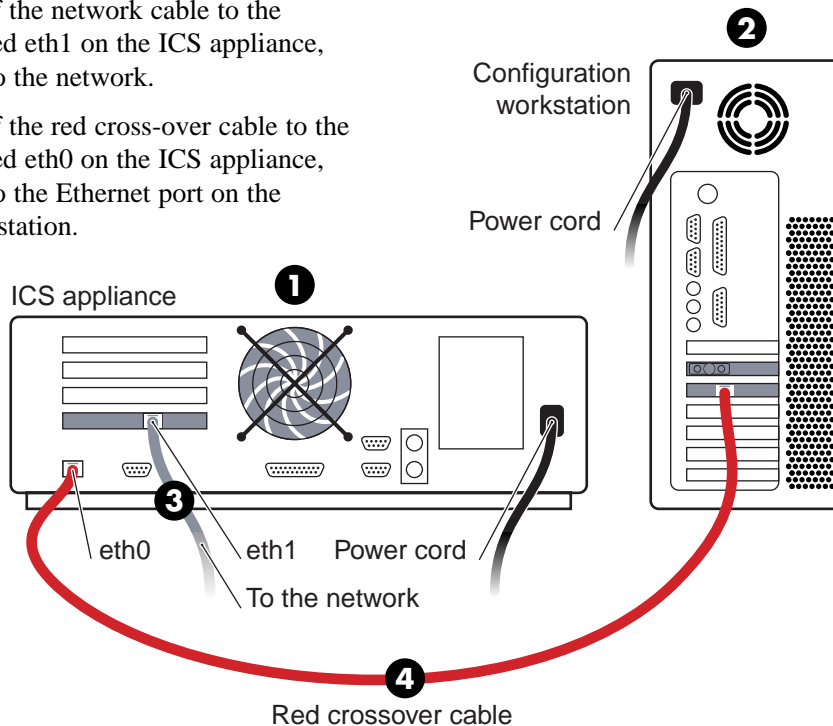
Hardware checklist:

- The ICS appliance.
- A cable to connect the appliance to the network.  
Hold a cable end in each hand. The left to right wire sequence will be the same on both ends.
- A PC or workstation running a Java\*-enabled browser, such as Netscape\* Navigator\* 4.07 (or higher), Netscape Communicator\* 4.5 (or higher), or Internet Explorer 4.01 (or higher).
- An Ethernet port on the PC or workstation.
- A red crossover cable to connect the workstation to the ICS appliance.  
Hold a cable end in each hand. Wires 1 and 3 and 2 and 6 are reversed.



Complete the following steps:

- 1** Turn on the ICS appliance.  
For the first couple of minutes, you might notice some system sluggishness the first time the appliance starts due to required fault tolerance processes. Do not restart the appliance.
- 2** Turn on the configuration workstation.
- 3** Connect one end of the network cable to the Ethernet port labeled eth1 on the ICS appliance, and the other end to the network.
- 4** Connect one end of the red cross-over cable to the Ethernet port labeled eth0 on the ICS appliance, and the other end to the Ethernet port on the configuration workstation.



## 2. PREPARING THE CONFIGURATION WORKSTATION

**Important:** Record your workstation configuration before making the following changes, and use your notes to restore the configuration after ICS setup is complete.

**Important:** Windows 2000 requires modification of its registry to work with a cross-over cable.

Therefore, to initialize an ICS appliance from a Windows 2000 workstation, you must complete the instructions found at <http://support.microsoft.com/support/kb/articles/Q23/9/9/24.ASP>.

Change the IP address of your configuration workstation by completing the following steps:

- 1 Right-click Network Neighborhood > click Properties > Configuration > TCP/IP Protocol > Properties.

- 2 Change the IP address and the subnet mask on the IP Address tab as shown.

If 10.1.1.2 is already in use, another 10-net address from 10.1.1.3 to 10.1.1.253 can be used.

- 3 Click Gateway > enter 10.1.1.1 in the New Gateway field > click Add.

- 4 Click DNS Configuration > enter 10.1.1.1 in the DNS Search Order field > click Add.

- 5 Click OK > restart the configuration workstation.

An IP address can be automatically assigned to this computer. If your network does not automatically assign IP addresses, ask your network administrator for an address, and then type it in the space below.

Obtain an IP address automatically

Specify an IP address:

IP Address:

Subnet Mask:

The first gateway in the Installed Gateway list will be the default. The address order in the list will be the order in which these machines are used.

New gateway:

Installed gateways:

**TCP/IP Properties**

Bindings Advanced NetBIOS

DNS Configuration Gateway WINS Configuration IP Address

Disable DNS

Enable DNS

Host:  Domain:

DNS Server Search Order

Domain Suffix Search Order

OK Cancel

### 3. CONFIGURING THE ICS APPLIANCE

You need the following addresses:

- An IP address for the eth1 network interface card
- The subnet mask for the eth1 IP address
- A DNS server address
- A default gateway address on the same subnet as the eth1 IP address

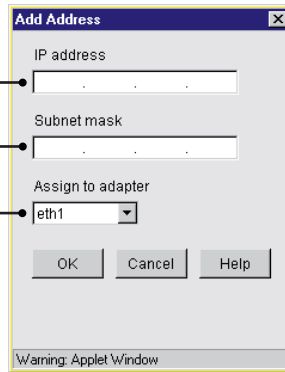
Complete the following steps:

- 1 Start Netscape or Internet Explorer on the configuration workstation.
- 2 Point the browser to the URL <http://10.1.1.1:1959/appliance/config.html>.
- 3 Click Network in the left panel > IP Addresses > Add Address.
- 4 Enter the IP address \_\_\_\_\_ and subnet mask. \_\_\_\_\_
- 5 Click the Assign to Adapter drop-down list > select eth1 > click OK. \_\_\_\_\_
- 6 Click DNS \_\_\_\_\_ > enter the DNS server IP address. \_\_\_\_\_
- 7 Click Gateway/Firewall \_\_\_\_\_ > enter the default gateway IP address for the eth1 network connection. \_\_\_\_\_
- 8 Click System in the left panel > click Actions > click Password > enter passwords for Config and View users. \_\_\_\_\_
- 9 Click Apply. \_\_\_\_\_

To configure the ICS appliance to begin providing forward proxy service:

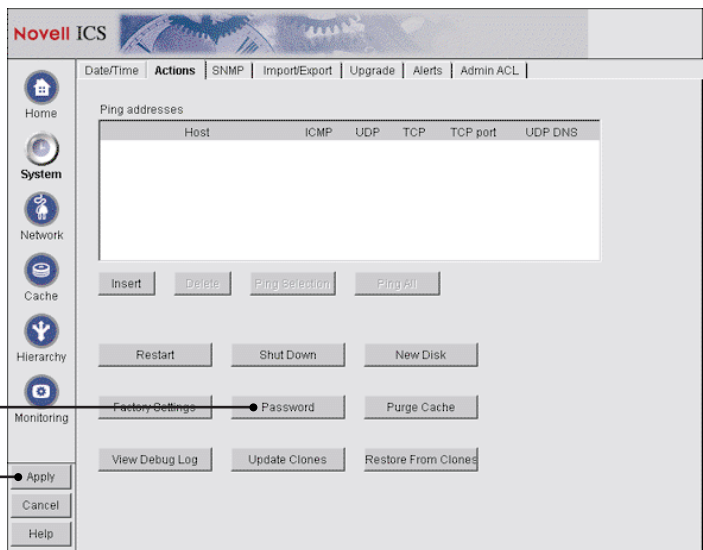
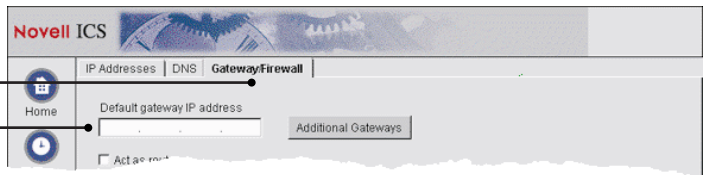
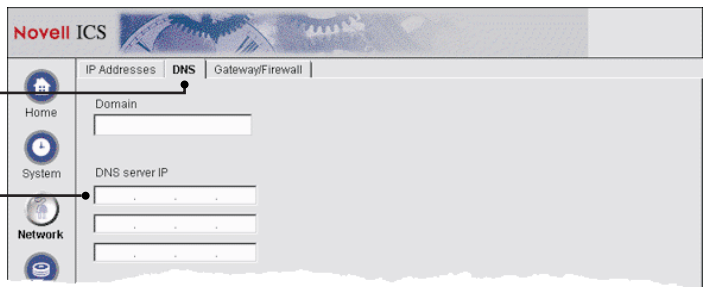
- 1 Click Cache in the left panel > Client Accelerator.
- 2 Check Enable Client Acceleration.
- 3 Check the eth1 IP address to enable it for forward proxy service.

The ICS appliance is now configured to begin providing forward proxy services to appropriately configured client browsers.



Important: You must use a Java-based browser to access the browser-based management tool.

Important: You must ensure that no other network devices are using IP address 10.1.1.1 during the configuration process.



## 4. TESTING THE ICS APPLIANCE

A configured ICS appliance provides forward proxy services on eth0's 10.1.1.1 IP address by default.

One easy way to check that the appliance is working is to test the forward proxy service.

To test the forward proxy service using a Netscape browser:

- 1 In the main browser window, click Edit > Preferences > Advanced > Proxies.
- 2 Click Manual Proxy Configuration > View.
- 3 For the HTTP proxy address, type 10.1.1.1.
- 4 Type 8080 in the Port field.
- 5 Click OK in each open dialog box and go to Step 7 below.

To test the forward proxy service using an Internet Explorer 4 browser:

- 1 In the main browser window, click View > Internet Options.
- 2 Click Connection.
- 3 Check Access the Internet Using a Proxy Server.
- 4 In the Proxy Server Address field, enter 10.1.1.1
- 5 Enter 8080 in the Port field.
- 6 Click OK in each open dialog box.

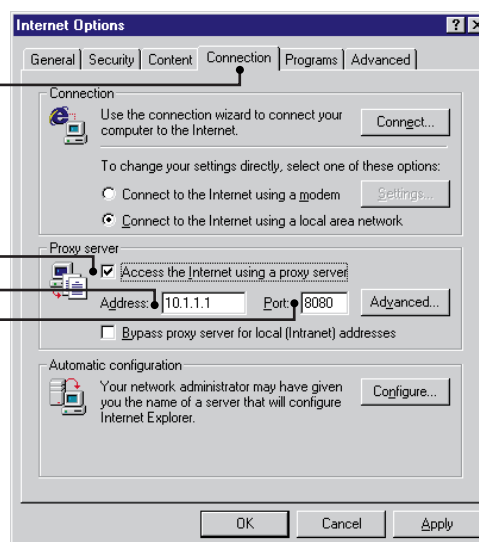
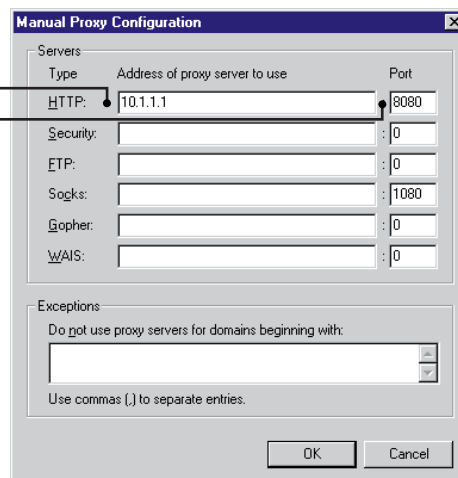
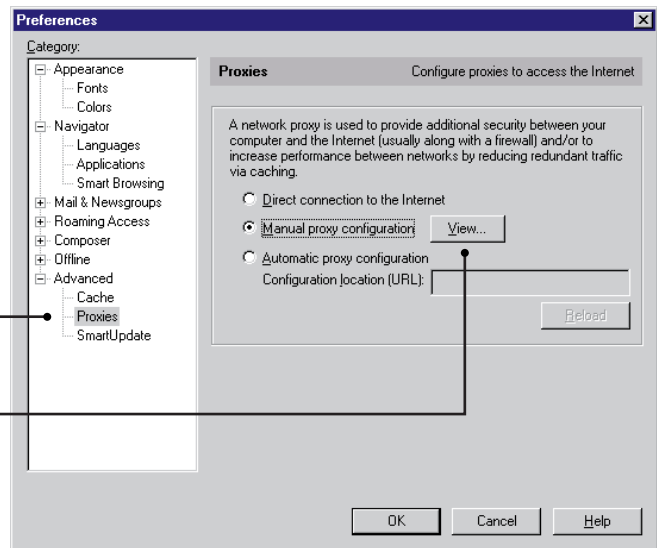
The configuration workstation browser will now use the appliance for forward proxy services as long as it is connected to eth0 by the red crossover cable.

- 7 Clear the browser's cache and browse to a Web site you haven't visited before. If you have cleared the browser's cache, everything you see is coming through the forward proxy service.

If you experience problems, see Troubleshooting in the online documentation.

To test using an Internet Explorer 5 browser:

- 1 In the main browser window, click Tools > Internet Options > Connections > LAN Settings.
- 2 Check Use a Proxy Server > continue with Step 4 above.



## About Starting and Stopping the ICS Appliance

You can stop and restart the ICS appliance from the browser-based management tool. Click System > Actions > Shut Down or Restart. A sequence of three long beeps indicates the appliance can be turned off.

To restart an ICS appliance that has been initialized and turned off, turn the switch on and the appliance will start automatically. A sequence of two long beeps followed by four short beeps indicates the appliance is ready.

**Warning:** Turning the system off without using SHUTDOWN can cause system corruption problems, in which case you will have to reimage the system and reconfigure the ICS appliance.

**Important:** After you initialize an ICS system, you should remove the CD (if inserted) and shut down the appliance. When you hear the shutdown beep sequence, toggle the power switch off then on again to restart the appliance.

## ICS Online Documentation

You access ICS online documentation by clicking Help in the browser-based tool.

The left frame contains topic headings you can click for access to specific sections.

- Basic explanations of how ICS features work
- Basic steps for configuring your network and the ICS appliance to provide basic caching services
- General tips and guidelines regarding using other ICS features not directly related to caching
- Information on using the browser-based tool to manage ICS, as well as the purpose of its panels, tabs, and dialog boxes, and their contents
- Information regarding ICS console commands
- Instructions for establishing a Telnet\* session with ICS and steps for using console commands to initialize and configure the appliance
- Instructions for connecting to ICS using a null-modem cable
- Tips and tricks for fixing ICS problems
- Information on upgrading ICS

**Novell ICS 1.3 Administration Guide**

- [Overview](#)
- [Setting Up Basic Caching Services](#)
- [Using Other ICS Services](#)
- [Browser-Based Management Tool Reference](#)
- [Command Line Reference](#)
- [Connecting through Telnet](#)
- [Connecting through a Null-Modem Cable](#)
- [Troubleshooting ICS](#)
- [Upgrading ICS](#)

**Novel Administrati**

Click the links below to a

- [Release Notes for ICS 1.3](#)
- [New Feature Summaries -](#)
- [ICS 1.3 Getting Started \(P](#)

You can initialize the ICS appliance using an attached keyboard, Telnet, or a null-modem cable by doing the following:

- 1 Turn on the appliance.
- 2 If you are using an attached monitor and keyboard, skip to Step 4. If you are using a null-modem cable, skip to Step 3. If you are connecting using Telnet, ensure that you have a network connection between the ICS appliance and the configuration workstation.

- 3 Start a Telnet or null-modem session on the configuration workstation.

Refer to the online documentation in the browser-based tool for help.

The starting address should be 10.1.1.1, which is the address of eth0 on the ICS appliance.

When prompted for a password, press Enter.

After connecting, you will see the following prompt: Internet Caching System.

- 4 At the Internet Caching System prompt, enter

```
set eth1 address=iii.iii.iii.iii,  
    mask=mmm.mmm.mmm.mmm  
set dns server=ddd.ddd.ddd.ddd  
set dns domain=xxxxx  
set gateway nexthop=ggg.ggg.ggg.ggg,  
    metric=t  
apply
```

where *i* = the IP address, *m* = the subnet mask, *d* = the DNS server IP address, *x* = your domain name, *g* = the gateway IP address for the eth1 IP address subnet, and *t* = the number of hops to the next hop.

Telnet access is not secure until a password is set for the Config user.

**Important:** Appliance access is not secure until a password is set for the Config user.

To set a password for the Config user:

- 1 At the Internet Caching System prompt, enter

```
set password=pppppp,user=config  
apply
```

where *pppppp* = the password for configuration access.

To configure the ICS appliance to provide forward proxy service:

- 1 At the Internet Caching System prompt, enter

```
set forward address=iii.iii.iii.iii  
apply
```

where *i* = the IP address you entered in Step 4 above.

The ICS appliance is now configured to begin providing forward proxy service.

## Legal Information

Copyright © 1997-2000 Novell, Inc. All rights reserved. No part of this publication may be reproduced, photocopied, stored on a retrieval system, or transmitted without the express written consent of the publisher.

Novell is a registered trademark of Novell, Inc. in the United States and other countries.

All third-party trademarks are the property of their respective owners.