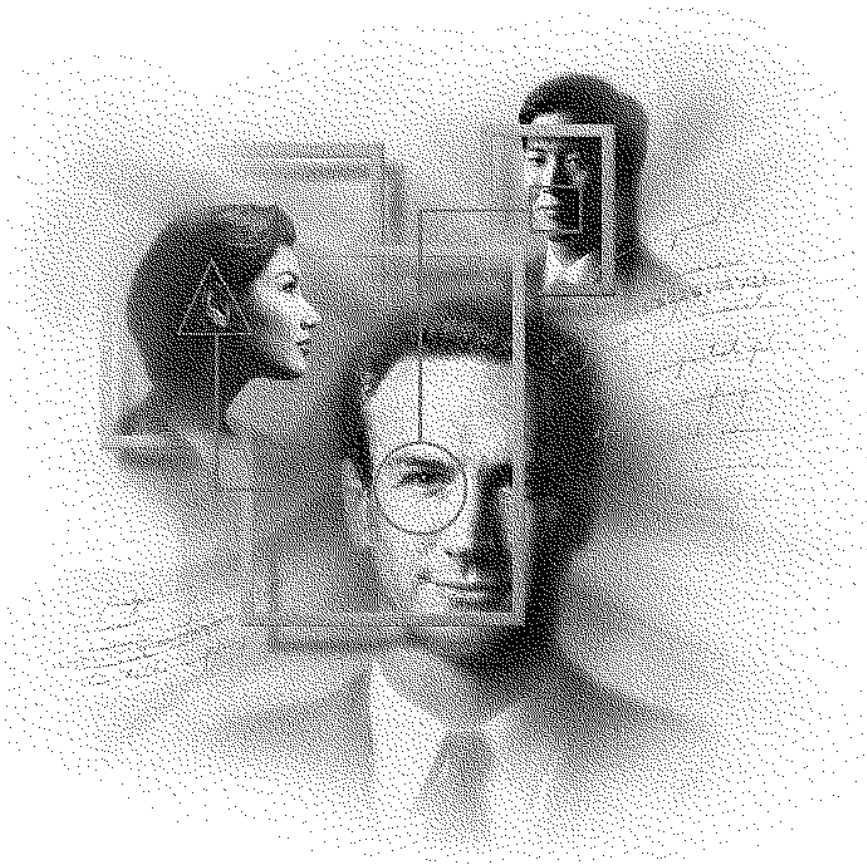


VERSION 5.5

Security



GroupWise®

GATHER, ACCESS, AND COMMUNICATE INFORMATION

Novell®

## Legal Notices

Novell, Inc. makes no representations or warranties with respect to the contents or use of this documentation, and specifically disclaims any express or implied warranties of merchantability or fitness for any particular purpose. Further, Novell, Inc. reserves the right to revise this publication and to make changes to its content, at any time, without obligation to notify any person or entity of such revisions or changes.

Further, Novell, Inc. makes no representations or warranties with respect to any software, and specifically disclaims any express or implied warranties of merchantability or fitness for any particular purpose. Further, Novell, Inc. reserves the right to make changes to any and all parts of Novell software, at any time, without any obligation to notify any person or entity of such changes.

This product may require export authorization from the U.S. Department of Commerce prior to exporting from the U.S. or Canada.

Copyright © 1993-1999 Novell, Inc. All rights reserved. No part of this publication may be reproduced, photocopied, stored on a retrieval system, or transmitted without the express written consent of the publisher.

U.S. Patent Nos. 4,555,775; 4,580,218; 5,412,772; 5,701,459; 5,717,912; 5,760,772; 5,870,739; 5,873,079; 5,884,304; 5,903,755; 5,913,209; 5,924,096; 5,946,467; D393,457 and U.S. Patents Pending.

Novell, Inc.  
122 East 1700 South  
Provo, UT 84606  
U.S.A.

[www.novell.com](http://www.novell.com)

Security  
February 2000  
104-001294-001

**Online Documentation:** To access the online documentation for this and other Novell products, and to get updates, see [www.novell.com/documentation](http://www.novell.com/documentation).

## **Novell Trademarks**

Novell is a registered trademark of Novell, Inc. in the United States and other countries.

NetWare is a registered trademark of Novell, Inc. in the United States and other countries.

GroupWise is a registered trademark of Novell, Inc. in the United States and other countries.

NDS is a registered trademark of Novell, Inc. in the United States and other countries.

NLM is a trademark of Novell, Inc.

SoftSolutions is a registered trademark of SoftSolutions Technology Corporation, a wholly owned subsidiary of Novell, Inc.

## **Third-Party Trademarks**

All third-party trademarks are the property of their respective owners.



# Contents

<b>1</b>	<b>GroupWise Administrator Rights</b>	<b>9</b>
	Setting Up a GroupWise Administrator as an Admin Equivalent . . . . .	9
	Assigning Rights Based on Administration Responsibilities . . . . .	10
	Directory Rights. . . . .	10
	Object and Property Rights. . . . .	11
	Common Types of GroupWise Administrators . . . . .	15
<b>2</b>	<b>GroupWise Agent Rights</b>	<b>25</b>
	Setting the MTA File System Rights . . . . .	25
	Assigning Rights to the Domain Directory . . . . .	25
	Assigning Rights to Post Office Directories and Other Domain Directories . . . . .	26
	Setting the MTA Object Rights . . . . .	27
	Setting the POA File System Rights . . . . .	28
<b>3</b>	<b>GroupWise User Rights</b>	<b>31</b>
	Setting Access Rights for Individual Users . . . . .	32
	Setting Access Rights for All Users in a Post Office . . . . .	32
	Configuring NetWare Administrator to Automatically Set Rights. . . . .	34
	File System Rights . . . . .	35
	Software Distribution Directory Rights . . . . .	35
	Post Office Directory Rights . . . . .	36
	NDS Object Rights . . . . .	37
	GroupWise Name Server (NGWNAMESEVER) . . . . .	37
<b>A</b>	<b>Granting or Removing Object and Property Rights</b>	<b>39</b>
<b>B</b>	<b>Object and Property Rights</b>	<b>41</b>



# GroupWise 5.5 Security

This documentation lists the directory and object rights required by GroupWise<sup>®</sup> administrators, users, and agents.





# 1

## GroupWise Administrator Rights

To administer GroupWise<sup>®</sup>, a user needs the appropriate directory rights, NDS<sup>®</sup> object rights, and NDS property rights.

If security is not an issue, you can set up your GroupWise administrators as Admin equivalents. This gives them rights to all directories and objects on your network and ensures they will have full rights to administer GroupWise. For instructions, see [“Setting Up a GroupWise Administrator as an Admin Equivalent” on page 9](#).

If security is an issue, you can restrict GroupWise administrators' rights so they have access only to the directories and NDS objects needed to administer GroupWise. For instructions, see [“Assigning Rights Based on Administration Responsibilities” on page 10](#).

### Setting Up a GroupWise Administrator as an Admin Equivalent

The easiest way to ensure a GroupWise administrator has all necessary rights is to make the administrator an Admin equivalent. Unless you have implemented multiple administrators who have different roles and access rights (for example, a server administrator, a printer administrator, and a GroupWise administrator), we suggest you make your GroupWise administrator an Admin equivalent.

To make a GroupWise administrator an Admin equivalent:

- 1** Double-click the GroupWise administrator's user object in the NDS tree.
- 2** Click the Security Equal To button to display the Security Equal To page.
- 3** Click Add to display the Select Object dialog box.

- 4 In the Browse Context list, change to the context in which the Admin object is located.
- 5 In the Available Objects list, select the Admin object > click OK.  
The Admin object should now be listed in the Security Equal To list box.
- 6 Click OK.

## Assigning Rights Based on Administration Responsibilities

Making a GroupWise administrator an Admin equivalent gives the GroupWise administrator rights to all directories and objects on your network. To increase security or to support a distributed administration model, you can assign directory, object, and property rights to your GroupWise administrators based on their administration responsibilities. For example,

- ♦ If you have only one GroupWise administrator (a centralized GroupWise administration model), you can give the administrator rights only to the directories and NDS objects that are used to administer the GroupWise system.
- ♦ If you have multiple administrators who are each responsible for a domain (a distributed GroupWise administration model), you can restrict their administration rights to their domain only.
- ♦ If you have one administrator who you want to control all links between domains, you can assign link configuration rights to that administrator only.

The following two sections, “[Directory Rights](#)” on page 10 and “[Object and Property Rights](#)” on page 11, provide general information about directory, object, and property rights needed to perform GroupWise administration tasks. The final section, “[Common Types of GroupWise Administrators](#)” on page 15, lists some common types of GroupWise administrators (for example, Domain administrator and Post Office administrator) and the specific directory, object, and property rights they need.

### Directory Rights

A GroupWise administrator must have an account (or security equivalence) that provides the following rights to the directories listed below:

Directory	NetWare Rights	Windows NT Permissions
SYS:PUBLIC (for NetWare® Administrator and GroupWise Administrator DLLs)	Read File Scan	Not applicable
Any GroupWise system directory the administrator is responsible for. This includes: <ul style="list-style-type: none"> <li>◆ domain directories</li> <li>◆ post office directories</li> <li>◆ software distribution directories</li> <li>◆ library storage area directories</li> </ul>	Read Write Create Erase Modify File Scan Access Control	Full Control
Any directory in which the GroupWise agents are installed.  For NetWare, the default directory is SYS:SYSTEM.  For Windows NT*, the default directory is C:\GRPWISE	Read Write Create Erase Modify File Scan Access Control	Full Control

## Object and Property Rights

The object and property rights an administrator requires depend solely on the administrative tasks he or she needs to perform. In GroupWise administration, there are five basic tasks an administrator can perform:

- ◆ **Create and delete objects** (for example, domains, post offices, gateways, agents, libraries, resources, external entities, and distribution lists).
- ◆ **Modify object properties** (for example, move a GroupWise user from one post office to another or delete a GroupWise user from a distribution list).
- ◆ **Modify link information** (for example, define whether Domain 1 links directly to Domain 3 or indirectly to Domain 3 through Domain 2).
- ◆ **Perform system operations** (for example, manage software distribution directories, create administrator-defined fields, and set up NDS user synchronization).

- ◆ **Perform maintenance operations** (for example, rebuild domain and post office databases, analyze and fix user and message databases, and change a user's client options).

## Create and Delete Objects

The following rules apply to creating or deleting a GroupWise object (for example, domain, post office, gateway, agent, library, resource, external entity, or distribution list):

- ◆ The administrator must have Create or Delete object rights for the container in which the GroupWise object is being created or from which it is being deleted.
- ◆ If creating or deleting the object requires modification of another object's properties, the administrator must have Read and Write rights to that object's NGW: GroupWise ID property and all other affected properties. For example, when you create a distribution list, the list is assigned to a post office. Therefore, the administrator needs Read and Write rights to the post office object's NGW: GroupWise ID property and NGW: Distribution List Member property.

For information about giving a user rights to an object or an object's properties or restricting a user's rights to an object or an object's properties, see [Appendix A, "Granting or Removing Object and Property Rights," on page 39](#).

## Modify Object Properties

Each object has certain properties that hold information about the object. For example, a user object includes Full Name, Given Name, Last Name, Network Address, and Title properties. The following rules apply to modifying an object's properties:

- ◆ Each object has a NGW: GroupWise ID property. The administrator must always have Read and Write rights to the NGW: GroupWise ID property for the object being modified. Without rights to the NGW: GroupWise ID property, no modifications can be made to any of the object's GroupWise properties.
- ◆ The administrator must have Read and Write rights to the property being modified. For example, to change a user's visibility within the GroupWise system, the administrator requires Read and Write rights to the user object's NGW: GroupWise ID property and NGW: Visibility property.

- ◆ If the modification affects another object's properties, the administrator must have Read and Write rights for that object's affected properties. For example, when you move a user from one post office to another, the move affects properties for 1) the user object, 2) the post office object from which you are moving the user (the source post office) and 3) the post office object to which you are moving the user (the target post office). Therefore, the administrator must have 1) Read and Write rights for the user object's NGW: GroupWise ID property and NGW: Post Office property, 2) Read and Write rights for the source post office object's NGW: GroupWise ID property and Members property, and 3) Read and Write rights for the target post office object's NGW: GroupWise ID property and Members property.

Modifications to an object can fail for the following reasons:

- ◆ The administrator does not have the appropriate rights to the property. For example, to restrict an administrator from moving a user from one post office to another, you could 1) not give the administrator Read and Write rights to the source or target post office object's NGW: Members property or 2) not give the administrator Read and Write rights to the user object's NGW: Post Office property.
- ◆ In addition to properties the administrator has rights to modify, the administrator also modifies a property he or she does not have rights to modify. For example, if an administrator has rights to modify a user's mailbox ID and visibility but does not have rights to modify the mailbox expiration date, any modifications made to the mailbox ID and visibility will fail if the administrator tries to modify the mailbox expiration date at the same time.

In general, a GroupWise administrator should have Read and Write rights to all GroupWise properties for the objects he or she needs to administer. This ensures that the administrator will be able to modify all GroupWise information for the objects. In addition, an administrator should also have Read and Write rights to other NDS properties used by GroupWise. For example, Full Name is a general NDS property used by GroupWise. For a list of GroupWise objects and their GroupWise-specific properties and associated NDS properties, see [Appendix B, "Object and Property Rights," on page 41](#).

For information about giving a user rights to modify an object's properties or restricting a user's rights to modify an object's properties, see [Appendix A, "Granting or Removing Object and Property Rights," on page 39](#).

## Modify Link Information

By default, when an administrator creates a domain or post office, the links to other domains or post offices are automatically created. Because there are many different ways you can configure your domain and post office links, you can use the Link Configuration utility to modify how domains and post offices are linked together. You can also use object and property rights to determine which administrators have the ability to modify link information. The following rules apply to modifying link information:

- ◆ To modify the links for post offices within a domain, the administrator must have Read and Write rights to the NGW: GroupWise ID property for the domain object and the post office objects. In addition, the administrator must have Write rights to the NGW: Link Configuration property for the domain object.
- ◆ To modify the links between domains, the administrator must have Read and Write rights to the NGW: GroupWise ID property for each domain object, and Write rights to the NGW: Link Configuration property for each domain object.

Because correct domain and post office links are essential to the proper functioning of your GroupWise system, you may want to assign link configuration tasks to a single administrator and restrict other administrators' abilities to modify link information. Or, if you have a multiple-domain system with multiple administrators, you could have one administrator responsible for all domain links and the other administrators responsible for the post office links for their domains. For information about giving a user rights to an object's properties (or restricting a user's rights to an object's properties), see [Appendix A, "Granting or Removing Object and Property Rights," on page 39](#).

## Perform System Operations

To perform system operations such as managing software distribution directories, creating administrator-defined fields and setting up NDS user synchronization, an administrator must have Read and Write rights to the NGW: GroupWise ID property for the primary domain object. In GroupWise systems that span multiple NDS trees, the administrator's current tree must be the tree in which the primary domain object is located.

For information about giving a user rights to an object's properties or restricting a user's rights to an object's properties, see [Appendix A, "Granting or Removing Object and Property Rights," on page 39](#).

## Perform Maintenance Operations

To perform maintenance operations such as validating, recovering, or rebuilding domain databases; fixing user, resource, or post office databases; or changing a user's client options, an administrator must have Read and Write rights to the NGW: GroupWise ID property for the object being modified. For example, to rebuild a domain database, an administrator requires Read and Write rights to the NGW: GroupWise ID property for the domain object. Or, to change a user's client options, an administrator requires Read and Write rights to the NGW: GroupWise ID property for the user object.

For information about giving a user rights to an object's properties or restricting a user's rights to an object's properties, see [Appendix A, "Granting or Removing Object and Property Rights,"](#) on page 39.

## Common Types of GroupWise Administrators

The following sections provide information about assigning directory, object, and property rights to some common types of GroupWise administrators:

- ◆ [Domain administrator](#)
- ◆ [Post Office administrator](#)
- ◆ [Link Configuration administrator](#)

### Domain Administrator

A Domain administrator is a GroupWise administrator who has all directory, object, and property rights needed to create and maintain a single GroupWise domain.

#### Directory Rights

A Domain administrator requires rights to the directories listed in the following table.

Directory	NetWare Rights	Windows NT Permissions
SYS:PUBLIC (for NetWare Administrator and GroupWise Administrator DLLs)	Read File Scan	Not applicable

Directory	NetWare Rights	Windows NT Permissions
<p>Any GroupWise system directory the administrator is responsible for. This includes:</p> <ul style="list-style-type: none"> <li>♦ domain directories</li> <li>♦ post office directories</li> <li>♦ software distribution directories</li> <li>♦ library storage area directories</li> </ul> <p>If the domain is not yet created, it will be necessary to give the administrator rights to the directories where it will be created.</p>	<p>Read Write Create Erase Modify File Scan Access Control</p>	<p>Full Control</p>
<p>The GroupWise agent directories.</p> <p>For NetWare, the default directory is SYS:SYSTEM.</p> <p>For Windows NT, the default directory is C:\GRPWISE</p>	<p>Read Write Create Erase Modify File Scan Access Control</p>	<p>Full Control</p>

## Object and Property Rights

A Domain administrator requires Read and Write rights to the object properties listed in the following table.



Object	Property
Domain (only the domain the administrator is responsible for)	NGW: File ID NGW: GroupWise ID NGW: Language NGW: Link Configuration (Only if the administrator will configure links to other domains; if so, the administrator also needs rights to the NGW: GroupWise ID and NGW: Link Configuration properties for the other domain objects) NGW: Location NGW: Network Type NGW: Time Zone ID NGW: Type NGW: Version Description Members Name
Post Office (all post offices in the domain)	NGW: Access Mode NGW: Distribution List Member NGW: Domain NGW: File ID NGW: GroupWise ID NGW: Language NGW: Library Member NGW: Location NGW: Network Type NGW: Resource Member NGW: Time Zone ID NGW: Version Description Members Name

Object	Property
Gateway (all gateway in the domain)	NGW: Domain NGW: File ID NGW: GroupWise ID NGW: Language NGW: Location NGW: Network Type NGW: Platform NGW: Time Zone ID NGW: Type Description Name
User (all users in the domain)	NGW: Account NGW: File ID NGW: Gateway Access NGW: GroupWise ID NGW: Mailbox Expiration Date NGW: Object ID NGW: Post Office NGW: Visibility Department Description E-mail Address Fax Number Given Name Last Name Telephone Title
Resource (all resources in the domain)	NGW: File ID NGW: GroupWise ID NGW: Owner NGW: Post Office NGW: Type NGW: Visibility Description Name

<b>Object</b>	<b>Property</b>
Distribution List (all distribution lists in the domain)	NGW: Blind Carbon Copy NGW: Carbon Copy Member NGW: GroupWise ID NGW: Post Office NGW: Visibility Description Members Name
Library (all libraries in the domain)	NGW: Archive Max Size NGW: Document Area Size NGW: File ID NGW: GroupWise ID NGW: Library Display Name NGW: Post Office NGW: Starting Version Number Description Members Name
Agent (all agents in the domain)	NGW: File ID NGW: GroupWise ID NGW: Platform NGW: Type Description Name Network Address
External Entity (all external entities in the domain)	NGW: Account ID NGW: External Net ID NGW: File ID NGW: GroupWise ID NGW: Mailbox Expiration Date NGW: Object ID NGW: Post Office NGW: Visibility Department Description E-mail Address Fax Number Given Name Last Name Telephone Title

In addition, the administrator must have Create and Delete rights in any container in which one of the objects listed above will be created or deleted.

## Post Office Administrator

A Post Office administrator is a GroupWise administrator who has all directory, object, and property rights needed to create and maintain a single GroupWise post office.

### Directory Rights

A Post Office administrator requires the rights to the directories listed in the following table.

Directory	NetWare Rights	Windows NT Permissions
SYS:PUBLIC (for NetWare Administrator and GroupWise Administrator DLLs)	Read File Scan	Not applicable
The domain directory	Read Write Create Erase Modify File Scan Access Control	Full Control
The following directories: <ul style="list-style-type: none"> <li>◆ post office directory</li> <li>◆ library storage area directories for libraries assigned to the post office</li> </ul>	Read Write Create Erase Modify File Scan Access Control	Full Control
The directory for the Post Office Agent.  For NetWare, the default directory is SYS:SYSTEM.  For Windows NT, the default directory is C:\GRPWISE	Read Write Create Erase Modify File Scan Access Control	Full Control

## Object and Property Rights

A Post Office administrator requires the Read and Write rights to the object properties listed in the following table.

<b>Object</b>	<b>Property</b>
Post Office	NGW: Access Mode NGW: Distribution List Member NGW: Domain NGW: File ID NGW: GroupWise ID NGW: Language NGW: Library Member NGW: Location NGW: Network Type NGW: Resource Member NGW: Time Zone ID NGW: Version Description Members Name
User (all users with accounts on the post office)	NGW: Account NGW: File ID NGW: Gateway Access NGW: GroupWise ID NGW: Mailbox Expiration Date NGW: Object ID NGW: Post Office NGW: Visibility Department Description E-mail Address Fax Number Given Name Last Name Telephone Title

Object	Property
Resource (all resources assigned to the post office)	NGW: File ID NGW: GroupWise ID NGW: Owner NGW: Post Office NGW: Type NGW: Visibility Description Name
Distribution List (all distribution lists assigned to the post office)	NGW: Blind Carbon Copy NGW: Carbon Copy Member NGW: GroupWise ID NGW: Post Office NGW: Visibility Description Members Name
Library (all libraries assigned to the post office)	NGW: Archive Max Size NGW: Document Area Size NGW: File ID NGW: GroupWise ID NGW: Library Display Name NGW: Post Office NGW: Starting Version Number Description Members Name
Agent (POA)	NGW: File ID NGW: GroupWise ID NGW: Platform NGW: Type Description Name Network Address

Object	Property
External Entity	NGW: Account ID NGW: External Net ID NGW: File ID NGW: GroupWise ID NGW: Mailbox Expiration Date NGW: Object ID NGW: Post Office NGW: Visibility Department Description E-mail Address Fax Number Given Name Last Name Telephone Title

In addition, the administrator must have Create and Delete rights in any container in which one of the objects listed above will be created or deleted.

## Link Configuration Administrator

A Link Configuration administrator has all directory, object, and property rights needed to create and maintain the links between GroupWise domains.

### Directory Rights

A Link Configuration administrator requires the rights to the directories listed in the following table.

Directory	NetWare Rights	Windows NT Permissions
SYS:PUBLIC (for NetWare Administrator and GroupWise Administrator DLLs)	Read File Scan	Not applicable
Domain directory	Read Write Create Erase Modify File Scan	Full Control

## Object and Property Rights

A Link Configuration administrator requires Read and Write rights to the object properties listed in the following table.

Object	Property
Domain (all domains)	NGW: GroupWise ID NGW: Link Configuration



# 2

## GroupWise Agent Rights

The Message Transfer Agent (MTA) and Post Office Agent (POA) require file system rights to certain GroupWise<sup>®</sup> directories. In addition, if you want the MTA to perform NDS<sup>®</sup> user synchronization, it requires rights to certain NDS objects.

- ♦ “Setting the MTA File System Rights” on page 25
- ♦ “Setting the MTA Object Rights” on page 27
- ♦ “Setting the POA File System Rights” on page 28

### Setting the MTA File System Rights

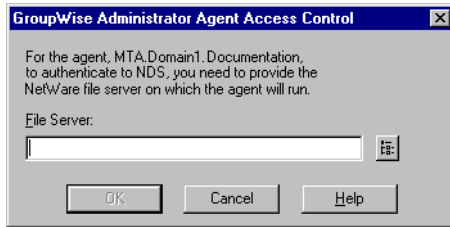
The MTA requires file system rights to its domain directory. In addition, if the MTA uses direct access (UNC path or mapped drive) to connect to post offices within the domain or to other domains, it needs rights to those post office directories and domain directories.

- ♦ “Assigning Rights to the Domain Directory” on page 25
- ♦ “Assigning Rights to Post Office Directories and Other Domain Directories” on page 26

### Assigning Rights to the Domain Directory

To give the MTA rights to its domain directory:

- 1** In the NetWare<sup>®</sup> Administrator browser window, select the MTA object.
- 2** Click Tools > GroupWise Utilities > Set Rights > OK to display the GroupWise Administrator Agent Access Control dialog box.



If you are setting access rights for an NLM™ MTA, the dialog box should display a File Server field, as shown above. If you are setting access rights for an NT MTA, the dialog box should display a User field. If the correct field does not appear, click Cancel, double-click the MTA object to display the MTA Information page, select the correct platform, click OK, then repeat steps 1 and 2.

- 3** For an NLM MTA, enter the file server on which the MTA is running > click OK.  
  
or  
  
For an NT MTA, enter the network user through which the MTA logs in to NDS > click OK.
- 4** After the rights have been set, click OK.

## Assigning Rights to Post Office Directories and Other Domain Directories

If the MTA does not use TCP/IP to link to the post offices within the domain, you need to give the MTA rights to the post office directories. In addition, if you have other domains in your system that the MTA links to directly rather than through TCP/IP, you need to give the MTA rights to those domain directories.

The following table lists the rights the MTA requires to post office directories and domain directories.

Directory	NetWare Rights	Windows NT Permissions
domain directory	Read	Full Control
post office directories	Write Create Erase Modify File Scan	

If your domain and post offices are on different server platforms (for example, a NetWare 4.1 server, a NetWare 3.12 server, and a Windows NT\* 4.0 server), you will need to create multiple network accounts for the MTA to access these servers. If you are using the NLM MTA, you need to use the same user ID and password for all of the MTA's accounts. At startup, the MTA reads the GroupWise domain database to find the location of the post offices. The MTA then uses the user ID and password to access the servers that contain the post offices. If you are using the NT MTA, we recommend using the same user ID and password for your accounts, but it is not required.

## Setting the MTA Object Rights

When you modify NDS information in NetWare Administrator, GroupWise Administrator replicates the information to the GroupWise domain and post office databases. However, in the following situations, the information will not be replicated:

- ◆ The information was changed using a NetWare Administrator that does not have the GroupWise Administrator DLLs installed.
- ◆ The information was changed using NETADMIN, the DOS-based NetWare Administrator program.
- ◆ The information was changed using the NWDS API.

The MTA can synchronize user information between NDS and the GroupWise domain and post office databases. For example, if you change a user's phone number in NDS, the MTA can update this information in the GroupWise domain and post office databases. To perform NDS user synchronization, the MTA must have the following object and property rights to any post office objects within the domain and to any user objects that are members of the post offices.

Object and Properties	Rights
Post Office object	Browse and Read
Members	Read
User object	Browse and Read
NGW: GroupWise ID	Read
Department	Read
Description	Read
Fax Number	Read
Given Name	Read
Last Name	Read
Telephone	Read
Title	Read
Any administrator-defined fields	Read

You can use the NDS User Synchronization feature in NetWare Administrator to provide the MTA with the appropriate NDS access rights. If you are using the NLM MTA, the MTA object is given the appropriate rights. If you are using the NT MTA, the network user through which the MTA accesses NDS is given the appropriate rights.

NetWare Administrator makes the MTA object or user object a trustee of the ROOT object, which gives the MTA rights to compare and read all properties for the ROOT object. With NetWare 5.x, rights are automatically inherited from the ROOT down, so the MTA receives the appropriate rights to the post office and user objects. With NetWare 4.1x, rights are not automatically inherited. After setting the access rights for the MTA at the ROOT, you will still need to provide the MTA object or user object with the access rights listed in the table above.

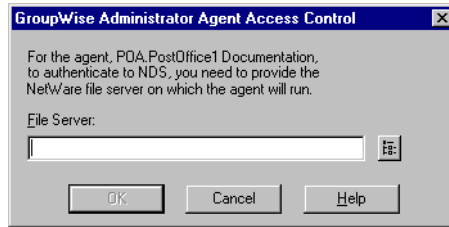
To enable the MTA to perform NDS user synchronization, see "[Using NDS User Synchronization](#)" in "[Reconfiguring the MTA](#)" in the *Agent Setup* guide.

## Setting the POA File System Rights

The POA requires file system rights to the post office directory. To give a POA rights to its post office directory:

- 1 In the NetWare Administrator browser window, select the POA object.

- 2 Click Tools > GroupWise Utilities > Set Rights > OK to display the GroupWise Administrator Agent Access Control dialog box.



If you are setting access rights for an NLM POA, the dialog box should display a File Server field, as shown above. If you are setting access rights for an NT POA, the dialog box should display a User field. If the correct field does not appear, click Cancel, double-click the POA object to display the POA Information page, select the correct platform, click OK, then repeat steps 1 and 2.

- 3 For an NLM POA, enter the file server on which the POA is running > click OK.

or

For an NT POA, enter the network user through which the POA logs in to NDS > click OK.

- 4 After the rights have been set, click OK.



# 3

## GroupWise User Rights

To use GroupWise<sup>®</sup>, users require the appropriate file system rights and NDS<sup>®</sup> object rights. You can use the Set Rights feature in NetWare<sup>®</sup> Administrator to provide the access rights. When you set a user's rights, the user receives the following rights:

- ◆ File system rights in the post office directory
- ◆ File system rights in the software distribution directory
- ◆ NDS object rights to the post office object

File system rights to the post office directory enable users to connect to the post office through direct access (UNC path or mapped drive), provided the post office access mode is set to Direct Access or Client/Server and Direct Access. File system rights to the software distribution directory enable users to run the GroupWise client Setup program. For details about the file system rights granted to each of these directories, see [“File System Rights” on page 35](#).

NDS object rights to the post office object enable the GroupWise client to automatically detect the user's post office and access mode (client/server or direct) when the user starts the GroupWise client. Without the appropriate NDS object rights, the GroupWise client will prompt the user for the post office information at startup. For details about the NDS object rights given to users, see [“NDS Object Rights” on page 37](#).

You can set the access rights for individual users, or you can set the rights for all users in a post office. In addition, you can configure NetWare Administrator to automatically set access rights for a user when you give the user a GroupWise account. To do so, see one of the following sections:

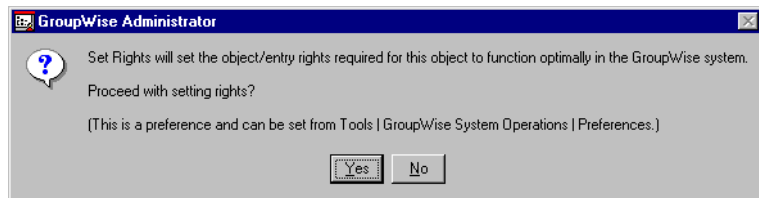
- ◆ [“Setting Access Rights for Individual Users” on page 32](#)
- ◆ [“Setting Access Rights for All Users in a Post Office” on page 32](#)

- ♦ “Configuring NetWare Administrator to Automatically Set Rights” on page 34

## Setting Access Rights for Individual Users

To set the file system rights and NDS object rights for individual GroupWise user:

- 1** In the NetWare Administrator browser window, select the users to whom you want to give access rights.
- 2** Click Tools > GroupWise Utilities > Set Rights to display the following dialog box.



- 3** Click Yes.

If the post office has not already been configured to give access rights to all users in the post office, you will be prompted to configure the post office at this time.

- 4** If you want to configure the post office to provide access rights to all members of the post office, click Yes.

or

Click No to only give access rights to the user you selected.

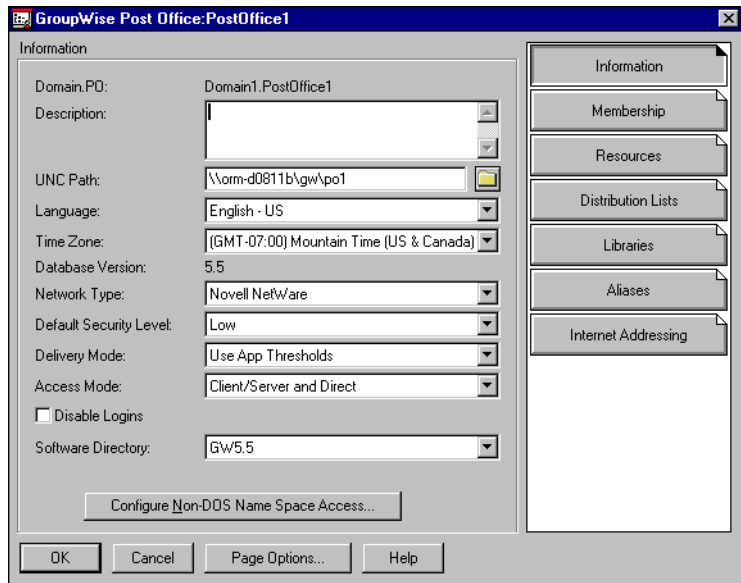
- 5** After NetWare Administrator has finished setting rights, click OK.
- 6** If you selected multiple users, repeat steps 4 and 5 for each user.

## Setting Access Rights for All Users in a Post Office

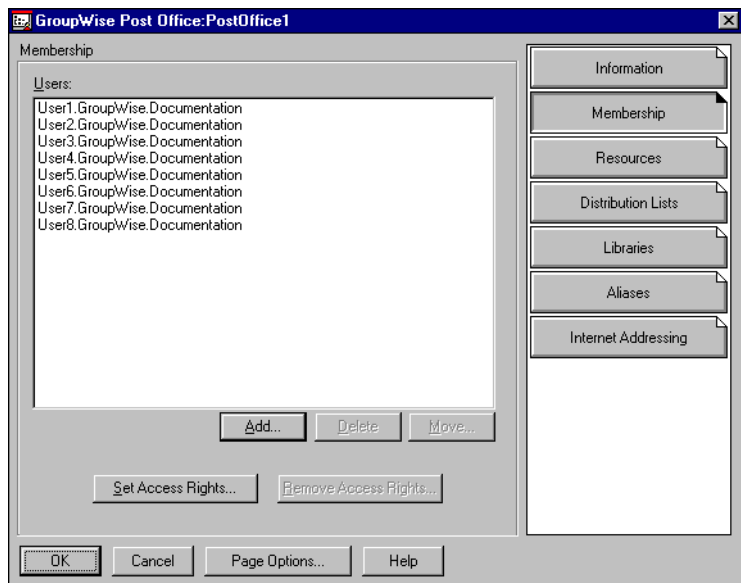
To set the file system rights and NDS object rights for all users in a post office:

- 1** In the NetWare Administrator browser window, right-click the post office object > click Details to display the post office Information page.





**2** Click Membership to display the Membership page.



**3** Click Set Access Rights > click OK.

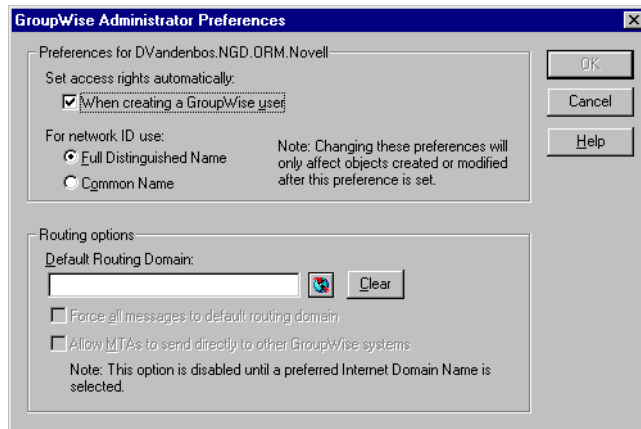
# Configuring NetWare Administrator to Automatically Set Rights

To configure NetWare Administrator to automatically give a user the appropriate access rights when you assign a GroupWise account to the user:

- 1 In NetWare Administrator, click Tools > GroupWise System Operations to display the GroupWise System Operations dialog box.



- 2 Double-click Preferences to display the GroupWise Administrator Preferences dialog box.



- 3 Click When Creating a GroupWise User to turn on the preference.

This preference is administrator-specific. If you log in as another administrator to add a GroupWise user, the user's rights will not be set unless that administrator has also set this preference. In addition, you need to have sufficient administrator rights to enable NetWare

Administrator to set the appropriate access rights. If you are not an Admin equivalent, see [“File System Rights” on page 35](#) and [“NDS Object Rights” on page 37](#) for information about the rights that NetWare Administrator must be able to set.

**4** Click OK.

## File System Rights

The file system rights required by GroupWise users are listed in the following sections. The easiest way to give users the appropriate access rights is to use the Set Rights features in NetWare Administrator. See [“Setting Access Rights for Individual Users” on page 32](#) and [“Setting Access Rights for All Users in a Post Office” on page 32](#).

## Software Distribution Directory Rights

The software distribution directory contains the Windows\* 3.1 and Windows 95/98/NT GroupWise client. To set up and run either of these GroupWise clients, users require the directory rights listed in the table below.

Directories	NetWare Rights	Windows NT Permissions
<i>software distribution directory</i>	R---F	Read
■ ADMIN	-----	No Access
■ AGENTS	-----	No Access
■ CLIENT	R---F	Read
■ OFVIEWS	R---F	Read
■ WIN16	R---F	Read
■ WIN32	R---F	Read
■ INTERNET	-----	No Access
■ DOMAIN	-----	No Access
■ PO	-----	No Access

**IMPORTANT:** Notice that users require rights to the CLIENT directory and subdirectories only. The other directories (ADMIN, AGENTS, DOMAIN, INTERNET, and PO) are administration directories that users should not have access to.

## Post Office Directory Rights

The following information applies only to users who are running the GroupWise client in direct access mode. Users who are running in client/server access mode do not require rights to the post office directories.

To increase security in your post office directories, you should restrict rights as shown in the following table.

Directories	NetWare Rights	Windows NT Permissions
<i>post office</i>	RWC--F	Change
GWDMS	RW---F	Change
LIBx	RW---F	Change
INDEX	RW---F	Change
ARCHIVE	RW---F	Change
ARxx	RW---F	Change
DOCS	RWCEMF	Full Control
FDx	RWCEMF	Full Control
OFFILES	R---F	Change
FDx	RWCEMF	Full Control
OFMSG	RWCEMF	Full Control
OFUSER	RWCEMF	Full Control
INDEX	RW---F	Change
OFVIEWS	-----	No Access
DOS	R---F	Read
WIN	R---F	Read
OFWORK	R---F	Read
OFDIRECT	RWCEMF	Full Control
WPC SIN	RWCEMF	Full Control
0-7	-WC-M-	Change
WPCSOUT	-----	No Access
OFS	RWC-MF	Full Control
0-7	RWC-MF	Full Control
ADS	-----	No Access

<b>Directories</b>	<b>NetWare Rights</b>	<b>Windows NT Permissions</b>
■ 0-7	-----	No Access
■ PROBLEM	-WC-M-	Change

## NDS Object Rights

At startup, the GroupWise client must know the following:

- ◆ The post office where the user has an account.
- ◆ Whether to connect to the user's post office in direct access mode or client/server access mode.

The user can supply this information in the GroupWise Startup dialog box that appears or use the `/ph-path_to_post_office`, `/ipa-IP_address`, `/ipp-TCP_port`, and `/@u-userID` startup options.

If you do not want users to have to supply this information, you can give users rights to the NDS objects shown below. When a user has rights to the objects, the GroupWise client can read the object's information in NDS to determine the user's post office and access mode. This requires users to be logged in to NDS. The easiest way to give users the appropriate NDS object and property rights is to use the Set Rights features in NetWare Administrator. See [“Setting Access Rights for Individual Users” on page 32](#) and [“Setting Access Rights for All Users in a Post Office” on page 32](#).

Object and Properties	Rights
User object	Browse
NGW:Post Office	Read
Post Office object	Browse
Network Address	Read
NGW:Access Mode	Read
NGW:Location	Read
NGW:Type	Read

## GroupWise Name Server (NGWNAMESEVER)

The following information applies to users running the GroupWise client in client/server access mode. If you do not want to provide object and property rights to GroupWise users as explained above, or if you have GroupWise users

who don't log in to NDS, you can set up a GroupWise name server. A GroupWise name server enables users to access their post office without knowing the IP address and port number of the Post Office Agent.

The GroupWise name server is a DNS host entry for one of the Post Office Agents in your GroupWise system. At startup, the GroupWise client automatically looks for the GroupWise name server. Once a user reaches the POA designated as the GroupWise name server, the POA redirects the user to the IP address and port number of the POA that services the user's post office.

The primary GroupWise name server must be named `ngwnameserver`. You can set up one backup GroupWise name server and name it `ngwnameserver2`. Both POAs must use the default TCP port of 1677.

To set up a GroupWise name server:

- 1** Use your tool of choice for modifying DNS.
- 2** Create an entry for the IP address of the POA you want to designate as the primary GroupWise name server > give it the host name `ngwnameserver`.
- 3** Create an entry for the IP address of the POA you want to designate as the backup GroupWise name server > give it the host name `ngwnameserver2`.

# A

## Granting or Removing Object and Property Rights

You can use trustee assignments to grant or restrict rights to an object and its properties. The following steps provide one way to grant or remove a user's rights to an object or its properties. For additional methods, see your NetWare<sup>®</sup> documentation.

- 1** Right-click the object in the NDS<sup>®</sup> tree > click Trustees of this Object.
- 2** Click Add Trustee to display the Select Object dialog box.
- 3** In the Browse Context list, change to the context in which the user is located.
- 4** In the Available Objects list, select the user object > click OK.
- 5** In the Object Rights box, select the desired rights.
- 6** In the Property Rights box, click Selected Properties.
- 7** Select the property you want > click Read and Write.
- 8** Repeat **Step 7** for each property you want to give the user rights to.
- 9** Click OK when finished.





# B

## Object and Property Rights

The table below lists the GroupWise® objects and the objects' GroupWise-specific properties and NDS-related properties.

GroupWise-specific properties are properties that apply only to GroupWise. For example, GroupWise ID is a GroupWise-specific property. GroupWise-specific properties begin with NGW.

NDS-related properties are general NDS® properties used in GroupWise. For example, Name and Telephone are general NDS properties displayed in the GroupWise Address Book. General NDS properties do not begin with NGW.

Object	Property
Domain	NGW: File ID NGW: GroupWise ID NGW: Language NGW: Link Configuration NGW: Location NGW: Network Type NGW: Time Zone ID NGW: Type NGW: Version Description Members Name

Object	Property
Post Office	NGW: Access Mode NGW: Distribution List Member NGW: Domain NGW: File ID NGW: GroupWise ID NGW: Language NGW: Library Member NGW: Location NGW: Network Type NGW: Resource Member NGW: Time Zone ID NGW: Version Description Members Name
Gateway	NGW: Domain NGW: File ID NGW: GroupWise ID NGW: Language NGW: Location NGW: Platform NGW: Time Zone ID NGW: Type Description Name
User	NGW: Account NGW: File ID NGW: Gateway Access NGW: GroupWise ID NGW: Mailbox Expiration Date NGW: Object ID NGW: Post Office NGW: Visibility Department Description E-mail Address Fax Number Given Name Last Name Telephone Title

<b>Object</b>	<b>Property</b>
Resource	NGW: File ID NGW: GroupWise ID NGW: Owner NGW: Post Office NGW: Type NGW: Visibility Description Name
Distribution List	NGW: Blind Copy Member NGW: Carbon Copy Member NGW: GroupWise ID NGW: Post Office NGW: Visibility Description Members Name
Library	NGW: Archive Max Size NGW: Document Area Size NGW: File ID NGW: GroupWise ID NGW: Library Display Name NGW: Post Office NGW: Starting Version Number Description Members Name
Agent	NGW: File ID NGW: GroupWise ID NGW: Platform NGW: Type Description Name Network Address

---

<b>Object</b>	<b>Property</b>
External Entity	NGW: Account ID NGW: External Net ID NGW: File ID NGW: GroupWise ID NGW: Mailbox Expiration Time NGW: Object ID NGW: Post Office NGW: Visibility Department Description E-mail Address Fax Number Given Name Last Name Telephone Title

---